


THE CITY OF
RED LODGE



Compiled by
JAMES T. MORGAN

COMPLIMENTS OF THE
BANKING HOUSE OF NEYER & CHAPMAN

BANK BLDG. FOR
MEYER & CHAPMAN
215 BROADWAY, N.Y.C.
J. C. SMITH & COMPANY
ARCHTS., 25 NASSAU, N.Y.C.



BANKING HOUSE OF MEYER AND CHAPMAN



W. F. MEYER



Carbon
County



Hospital and Sanitarium
Red Lodge, Mont.

The Only Up-to-Date HOSPITAL in Carbon County

Trained Nurses, Steam Heat, Electric Light, X-Ray.
Complete Electric and Thermal Apparatus.

S. M. SOUDERS, M. D., Resident Physician

The City of Red Lodge

BEAUTIFUL and picturesque, the City of Red Lodge, the county seat of Carbon County, is located at the foot of snowy mountains and beside the rapid sparkling waters of Rocky Fork, as fine a mountain stream as can be found in the world. From the city to the north as can be found in the world. From the city to the north for forty-five miles extends and widens a valley of rare fertility, while to the east and west extend the most prolific foothills and table lands traversed with countless irrigating canals. Within its limits and for miles on east and west and south are inexhaustible coal deposits. Abounding are nature's blessings bestowed upon Red Lodge.

The city has a present population of 4,000, and its coal mines now in operation distribute monthly a payroll of \$40,000, while new developments now rapidly progressing within five miles of the center of Red Lodge assure a doubling of the present coal output, pay roll and population of the city within a brief time.

Six churches, the Carbon county free high school, up to date public schools, 14 fraternal orders and two newspapers afford religious, educational and social opportunity, while a live board of trade looks to the commercial development of progress of the community.

The city owns its water system and a better system or purer water cannot be found.

A fine electric plant illuminates the business streets, homes and business houses.

A splendid gravity pressure, abundance of water and a well equipped volunteer fire department makes destructive fires well nigh impossible.

Two telephone systems, each having a local exchange and extensive long distance service, supply immediate communication with the rest of the state and adjacent states.

An annual county fair held at Red Lodge as the county seat of Carbon county, brings together an exhibit of fruits, vegetables, grains and grasses that absolutely cannot be equaled in excellence, diversity and yield by any region not watered by artificial irrigation.

Well founded, indeed, is the confidence of the prosperous and enterprising citizens of Red Lodge in the present and future of their city.

LUMBER



We Carry a Full Line of all Kinds of
BUILDING MATERIAL



Lime

Lath

Sash

Doors

Cement

Shingles

Blinds

Screens

Paints

Oils

Glass

Orders for Special Material Given Careful Attention

Having recently bought out the W. A. Talmage Co.'s entire lumber department, am better prepared than ever to attend to the wants of the public

What Is Your Call on Us, Whether You Want to Buy or Not

C. C. BOWLEN

TELEPHONE 44 RED LODGE, MONT.

OLDEST LUMBER DEALER IN RED LODGE

The Metier Furniture Store

ESTABLISHED 1893

House Furnishings and Undertaking

The Largest and Best Stock in Carbon County

Carpets Rugs

Linoleum

Lace Curtains

Portiers

Window Shades

Ostermoor Mattresses

Haviland China



*Crockery and
Glassware*

Picture Frames

*Charter Oak Stoves
and Ranges*

*Tin, Granite and
Enameled Ware*

*The place where you get the
most and best for your money*

==== **S. D. METIER ESTATE** ====



J. R. WEAVER



Livery, Feed
— AND —
Sale Stable



RED LODGE - - MONTANA



W. A. Talmage Company



INTERIOR HARDWARE STORE, RED LODGE



HARNESS SHOP, RED LODGE STORE



W. A. Talmage Company

Hardware, Implements
Harness, Lime, Cement
Kodaks and Sporting Goods



The Most Progressive and Up-to-Date || *RED LODGE*
House in Eastern Montana || *J O L I E T*

*Carbon
Mercantile
Company*



The Oldest Mercantile Institution of Its Kind in Red Lodge

Established in 1895

We credit our growth and success to honest business methods, square dealing and the
Best Goods for the Money

We have always made it our aim to sell all merchandise on a live and let live plan:

Pay our clerks a good salary.

Give our customers good values and make a living profit.

Otherwise we don't feel that we should be in business.



*Carbon
Mercantile
Company*

A Few of Our Exclusive Brands

Adler's Collegian Clothes for Men

Banner Brand Clothes for Children

Langner Hats

Russell Hand Sewed Gloves

Elgin Dress Shirts for Men

American Lady and American Gentleman Shoes

Security School Shoes

Gotzians Work Shoes for Men

Warner's Rust Proof Corsets

Buster Brown Hose for Boys and Girls

Lilly White Semi-Finished Corset Covers

Red Seal Double Fold Gingham

LaVogue Garments for Ladies, Misses and Children

Diamonds, Watches and Jewelry



*We have the Best Equipped and Largest Jewelry Store
in Eastern Montana*

You will find here a Splendid Line of

WATCHES DIAMONDS
CLOCKS CUT GLASS
SOLID GOLD JEWELRY SILVERWARE
GOLD FILLED JEWELRY
HAND PAINTED CHINA
All Strictly New and Up-to-Date

Eyes Tested and Glasses Ground to Fit

Watches, Clocks and Jewelry Repaired

A. H. DAVIS :: *The Jeweler and Optician*



The . . .
GOLDEN RULE

THE Above Picture is a snap shot of the 50-foot front of the Golden Rule Store. MONTGOMERY BROS., the proprietors, are up-to-date merchants and conduct one of the largest and most modern Dry Goods department stores in this section of the State. They visit the Eastern markets regularly, buy and sell for cash, and by their untiring efforts and up-to-date business methods have made this store a veritable Emporium for Dry Goods, Clothing, Shoes and ready-to-wear Garments of all kinds.

The Golden Rule is a popular trading place with the people of Red Lodge and surrounding country and justly deserves the very Large Patronage which it Enjoys.

Charms of Carbon County

Of all the counties of the state Carbon enjoys the distinction of being the best watered — thus making it the most desirable section of the state for agricultural purposes.

Red Lodge, the capital of Carbon county, is equipped with six church structures and three commodious school buildings. Another public school building will also soon be erected at an expenditure of \$15,000. In the public schools of the city 15 teachers are employed, and there are 700 pupils enrolled. The free county high school is also located at Red Lodge, and in this institution three teachers are employed. The educational progressiveness prevailing in Red Lodge is typical of the situation as it exists throughout the entire county.

In the election of 1906 Carbon county polled approximately 2,000 votes, indicating a total population of some 18,000 people.

There are verified instances of Carbon county rascals producing 140 bushels of oats to the acre.

It is confidently predicted that in the culture of sugar beets Carbon county will soon excel the most favored localities of Colorado.

There are scenic resorts in Carbon county surpassing in grandeur anything to be found in the picturesque mountains of Colorado.

Portions of Carbon county are covered by rural delivery routes, thus greatly expediting the prompt delivery of mail. The county seat of Carbon county is reached by a daily passenger train service.

The rearing of well-bred horses is proving a most profitable industry in Carbon county, and for this grade of animals there is always a most active market.

It is an acknowledged fact that Carbon county produces the choicest apples grown in Montana, a distinction of no small importance when we consider the adaptability of the famed Bitter Root valley to the production of fruit.

Carbon is the only county in the state which annually holds two excellent fairs. One is held at Red Lodge, the other at Bridger.

Farming land in Carbon county are appreciating in value with a rapidity which most handsomely attests to portion of our county that now so sadly lacks transportation of our county that now so sadly lacks transportation their desirability with those who seek homes with a view to engaging in successful and remunerative agricultural pursuits.

The many streams of Carbon county are prolific with trout, thus providing a most pleasing form of recreation for those who are piscatorially inclined.

Carbon county stands second in the state in the production of coal, its annual output running close to 1,000,000 tons. The county also has over three thousand square miles of determined coal lands.

This year's assessed valuation of Carbon county's taxable wealth is estimated to be in excess of \$5,000,000.

There can be nothing more desirable than a home in prosperous Carbon county.

A year ago the Orange Judd Farmer of New York offered a prize for the best crop of oats raised in 1908. Returns show the following results in bushels per acre from competing states: Maine, 29; Pennsylvania, 32; Vermont, 35; Minnesota, 37; New York, 42; Illinois, 44; Iowa, 63; Utah, 74; I. D. O'Donnell of Billings, Mont., 120. While Carbon county was not a competitor, it is well known that a

greater yield than 120 bushels per acre is no uncommon occurrence of the foot hills all along the base of our mountains.

Capital, talented or otherwise, can in Carbon county find employment both profitable to itself and exceedingly useful to the rapid development of our industries. By appropriately developing one of many splendid water powers now going to waste, light and electric power could be furnished to all the towns and cities of Carbon county, as well as our own neighboring city of Billings. By building an electric railway from Red Lodge to the Hearsebrook coal mines and from Red Lodge to the western part of our county to be operated by electricity developed by the water power, a transportation system would be established that would not only immediately be a dividend payer but it would result in trebling the crop output of the western tier facilities.

Red Lodge State Bank

(Incorporated)

*A General Banking
Business Transacted*

DIRECTORS:

E. M. Clark

W. B. Nutting

J. N. Tolman

F. L. Clark

D. G. O'Shea

*We Solicit Accounts and Correspondence, and Extend to Our Patrons Our
Facilities and Courtesies and Liberal Treatment,
County Warrants and Bonds Bought.*



RED LODGE STATE BANK

CHARLES WILSON

DEALER IN

*Confectionery, Cigars, Tobaccos
Mineral Waters, Etc.*



Proprietor

RED LODGE BOTTLING WORKS

County Agency for Coca-Cola

J. A. UNDERWOOD

C. B. UNDERWOOD

UNDERWOOD & UNDERWOOD



Funeral Directors and Embalmers
LADY ASSISTANT

Only Licensed Embalmers
in the County

RED LODGE - - MONTANA



T. R. AUSTIN
MAYOR
OF
RED LODGE



RESIDENCE
OF
T. R. AUSTIN

TWO STORES IN RED LODGE

AGENT FOR

Hart Schaffner & Marx
CLOTHING

Walk-Over Shoes

Stetson & Gordon Hats

DRY GOODS From A to Z

Goods at Eastern Prices

KARL

GET BUSY

Never during the history of Carbon County have the chances been so good for the Investor as they are at present.

Get in Now, Before the Advance

See me for anything in the Real Estate line. If I have not got what you want I will get it for you.

Now Is the Time of All Times

I have Choice Building Lots and City Property all over Red Lodge.

Ranch Property For Sale in All Parts of Carbon County

See my list of Ranch Property before going elsewhere. I have a large list to select from. Many are bargains, and all are at the right price. I can get you the place you want.

I SAY SEE ME FIRST

Geo. E. Mushbach

In Improvement Company's Block

RED LODGE - MONTANA

Peters, the Tailor

BUILDER OF

Tidy Togs For Men....

Cleaning & Repairing

Next to Red Lodge State Bank



COUNTY FAIR FRUIT EXHIBIT AT COUNTY FAIR IN RED LODGE, 1908



“Wake Up”

To the fact that

Luhrsen's

Is the best place to buy



Watches, Clocks, Silverware, Cut Glass and Jewelry
High Grade Watches a Specialty

FIRST CLASS REPAIRING PROMPTLY DONE AND GUARANTEED

HIGH GRADE GOODS
AT LOWEST PRICES

LUHRSEN, The Watch Man



RESIDENCE OF JOHN W. CHAPMAN

The Diversified Resources of Carbon County

OUR county most appropriately received its name from the known immense deposits of coal within its boundaries. That was twelve years ago. Since then large additional fields have been opened within the county at Bridger, Gelo and Bearcreek. In Red Lodge hitherto the mining has been on the east side of the Rocky Fork only, now as large a plant is ordered for the west side as has been in operation on the east. All indications make probable that the present output of 2,500 tons of coal per day in Carbon County will within the year be doubled; that instead of 1,600 men being employed in and about the coal mines of the county, as now, within the year there will be 2,000; and that the pay roll of the mines will within the year reach \$120,000.00 per month.

But mining is not our only industry. The soil of our valleys, table lands and foothills is unexcelled for fertility. The county is a network of streams carrying the limpid mountain waters to the Yellowstone. In the months of June and July, when the streams are highest, thousands of irrigating ditches divert the water of these streams to the thirsty soil to insure abundant harvests. On the uplands near the mountains timothy produces from two to five tons per acre, winter wheat from 35 to 75 bushels per acre, oats 70 to 140 measured bushels that weigh out 53 pounds to the bushel.

In the alleys and lower altitude alfalfa is king, and produces from five to seven tons per acre, while No. 1 hard wheat yields from 30 to 60 bushels per acre. And now, after a year's experience with growing sugar beets, our farms, because of the successful issue, are in many cases selling for \$100 per acre.

Fruit culture is most successful, and nowhere can finer apple orchards be found than in our Clark Fork valley. The fruit is absolutely free from worms, sound, perfect and of superior flavor and quality.

In the vegetable line there is nothing we cannot grow in great abundance and of the finest quality. While melons, cucumbers and tomatoes mature in the valleys and lower altitudes, the earlier and hardier vegetable is prolific and of the best grade, even when grown in our highest altitudes.

The stockgrower and stockmaster find here richest field for their industry. The abundance of water, the nutritious grasses for summer and the great quantity of alfalfa for winter make the ideal combination for sheep, cattle and horse raising. A new departure has been made within the year in the creamery business, which is meeting with great success, and Carbon County is already known for the excellence and quality of butter manufactured.

It has been well said: "With resources so many and so varied, a healthy and vigorous climate, vast coal deposits, fertile acres well watered, which respond plentifully to the toil of the husbandman, and where crops are sure and profitable; a good local market for produce, and established railroad communication with other markets in the state; good schools, an industrious, progressive and law-abiding citizenship; churches representative of every Christian denomination; magnificent mountain scenery; good hunting and better fishing. Carbon county offers to homeseekers and investors a field infinitely more attractive and with prospects for greater material growth than may be found in any region of the West, even those more generally advertised and better known."



HAUSER AVENUE, LOOKING SOUTH, RED LODGE, MONT.

The New Drug Store

We are the latest addition to the Drug Business in Red Lodge. Our Stock is Complete and certainly new

Our Line Includes . . .

STATIONERY. We have a big line of Box Papereries; Tablets, ruled and plain, with Envelopes to match. Typewriter Supplies. School Supplies.

FANCY Goods. Many things in Cut Glass and Fancy Novelties. Suitable for presents.

Brushes and Combs. All kinds and prices.

Bath Articles. Sponges, Bath Brushes, Soaps, Etc.

Candy. We have "Hayler's" Candy and have it come by express once a week. So we know it is Fresh.

Wall Paper. We carry by sample the finest line shown in town; also Mouldings to match, Plate and Plate Rail; in fact everything that goes to making walls look attractive.

Cigars. We have the largest line of domestic and imported Cigars in the city. Sixty-five varieties to select from. From 5c to 50c.

PRESCRIPTION DEPARTMENT. We think a lot of this department. It is filled with drugs that are fresh and pure, and we believe we can give you as good service as can be found in town and possibly better.

Johnson Drug Company

Next to Post Office

- - - -

Opp. Talmage



RESIDENCE OF W. F. MEYER

*Another Evidence of the Progressiveness of
the Red Lodge Citizens can be Observed in*

The Boston Department Store

Mr. A. Croonquist, in whose capable hands lies the full and active management of this great **Store of Economy**, arrived in this city six years ago and, seeing the necessity of an up-to-date store, immediately procured a lease of the ground floor of the Improvement Block, which the owners arranged according to his ideas and directions.

The result is evidenced in a store, which for thorough lighting and ventilation, completeness and commodious arrangement, together with a lavish yet artistic window display, cannot be surpassed in any Western City of many times the size of Red Lodge. Not content with merely carrying the ordinary class of Dry Goods, they are **Constantly Anticipating Public Wants**, and the result is that in this great Emporium will be found the "*ne plus ultra*" of wares" in **Men's Clothing, Furnishings, Ladies' Ready-to-wear Apparel, Millinery, Etc.**

The greatest of credit for the completeness and smooth running of this establishment is unquestionably due to the keen insight, tireless energy and excellent judgment of **Mr. Peters**, acting manager. His remarkable success as a manager, and his extraordinary keenness as a judicious advertiser induced Mr. Croonquist to place him in charge of the Red Lodge Store during his absence in California. His judgment was not misplaced, as is evidenced by the excellent results and patronage the store now enjoys.

***The Boston Store extends a Cordial Invitation to any and all to Visit
Our Establishment***

*Every courtesy possible is extended to Visitors and any
one finding it convenient to visit the store will find their
time well spent.* < !! !! !! !!



RED LODGE FIRE DEPARTMENT



CARBON COUNTY BANK

W. A. CLARK, President MARY B. ELJING, V-President B. E. VAILL, Cashier L. H. YERKES, Ass't Cashier

Carbon County Bank

DIRECTORS:

B. F. WHITE, President First National Bank,
Dillon, Mont.

W. A. CLARK, Attorney, Virginian City, Mont.

DR. GEORGE DILWORT, Red Lodge, Mont.

B. E. VAILL, Red Lodge, Mont.

L. H. YERKES, Red Lodge, Mont.

*Organized Under
the State Banking Laws
1895*

*Paid Up Capital
\$50,000.00*

CORRESPONDENTS:

HANOVER NATIONAL BANK, New York.

CONTINENTAL NAT'L BANK, Chicago.

FIRST NATIONAL BANK, St. Paul.

UNION BANK AND TRUST CO., Helena.

OLDEST BANK IN THE COUNTY

Carbon Milling Company
Joliet, Mont.

Only Flouring Mills in County

Carbon County

CARBON county, most popularly and appropriately designated as "The Gem of the Mountains," lies between the Yellowstone and Stillwater rivers on the north and west, the Wyoming state line on the south, and the Crow reservation on the east, being seventy miles east and west by forty-five miles north and south. Within its domain is included a volume of resources almost unparalleled for diversity and industrial productiveness. Nature has been prodigal in endowing this magnificent region, and we can boast of a county that will more generously support a greater number of industries than any other section of the state. The principal vocations in which our people engage are mining, agriculture and stock growing. In addition to these it has been demonstrated that in the low lands the culture of sugar beets can be made an unqualified success, and this industry will soon be engaged in upon a most elaborate scale. Down in the lower valleys the conditions are particularly favorable to fruit growing, and our exhibit at the Montana state fair held in Helena in 1906 established the fact that in this direction we can not be excelled by any other section of the state. For agricultural purposes we have a bounteous supply of water, and no county in the state is better equipped for irrigation purposes than are we. Numerous streams have their inception in the Bear Tooth and Pryor mountains, and these are augmented by the waters of the Yellowstone, Stillwater, Rosened and Clarke Fork and their many tributaries. Every portion of the county is most happily favored for the

purpose of successful irrigation, and no apprehension need ever be entertained as to the adequacy and sufficiency of our water supply.

In the growing of the cereals the most flattering success is attained. Barley, surpassing in quality and desirability the renowned product of the Gallatin valley, is an important product and for this there is always a healthy and remunerative market. Oats return an abundant yield, even upon what are known as the "dry ranches," and the production is from sixty to one hundred bushels per acre. The output from the wheat lands is from twenty-five to fifty bushels to the acre, and for this there is an excellent marketable demand. The prolific soil is also splendidly adapted to the production of alfalfa, and practically every farmer has a portion of his lands seeded to this nutritious provender. It has also been found that flax can be successfully grown here, and each year sees an addition to the number engaged in the cultivation of this staple article of commerce. Potatoes of an exceptional size and quality are produced here in abundance, and many other sections of the state derive their supply from this source. In fact, the generous soil of Carbon county can be made to produce a superior quality of any species of vegetable indigenous to a northern latitude.

With the settlement of the county the large bands of range cattle have disappeared from here but practically every farmer is engaged in the growing of cattle. To this he gives a personal attention not possible under the old

conditions, with the result that he finds this adjunct to his agricultural undertakings a most lucrative pursuit. The extraordinary mildness of our winters combined with the nutritious grasses which cover our ranges and an abundance of winter feed tend to the development of a grade of cattle especially sought for by the packers and butchers of the large cities.

The topography of Carbon county is such as to produce a great variety of altitudes. These vary from 2,990 to 14,000 feet above sea level, thus giving prospective settlers an opportunity to practically gratify their own inclinations as to what they desire in the matter of climatic surroundings.

As a resume of the inducements offered the thrifty, prospective settler by Carbon county, we have: A magnifi-

cently healthy and invigorating climate; vast and practically limitless deposits of the best quality of coal to be found in the west; endless acres of fertile lands abundantly watered, and which will generously respond to the efforts of the agriculturist, where crops are never a failure and always satisfactorily profitable; an excellent local market for our produce, and desirable railway connections with the outside world; schools that for efficiency cannot be surpassed; a citizenship noted for its progressiveness and public-spirit; church organizations thoroughly representative of all that could possibly be desired in that direction; an alluring and rarely attractive field for homeseekers and investors, and an assured future of prosperous industrial development which must directly and effectively appeal to all who contemplate locating in the west.

St. Agnes Church, Red Lodge, Mont.



ST. AGNES RECTORY

Sunday Services

Low Mass at 8:00 a. m. High Mass at 10:30 a. m.
Baptisms at 2:00 p. m. Sunday School at 2:30 p. m.
Meeting of the Children of Mary at 3:30 p. m.
Benediction and Sermon at 7:30 p. m.
Week Day Mass, every day at 8:00 a. m.
Evening services every first Friday of the month at 8:00 p. m.

Holy Days of Obligation

Low Mass at 8:00 a. m. High Mass at 10:30 a. m.
Benediction at 8:00 p. m.

Rules of the Congregation

I. All members of the Parish should have their names entered upon their Parish record.— (Pew Book.)

II. It is an act of charity to make your Priests acquainted with any newcomer or with any member who may be neglectful in Church attendance.

Sunday School

Sunday School every Sunday. Special instructions for first communion begin the first Saturday of Lent and continue until August 15, the feast of the Assumption of the Blessed Virgin Mary, when the day of the first Communion is solemnly celebrated in this Parish.

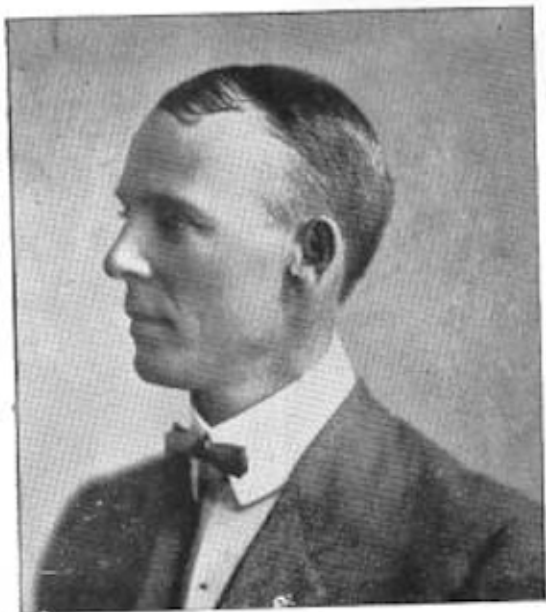


REV. JAMES M. VERMAAT, Pastor

Church Societies

Ladies' Sanctuary Society
Sacred Heart League
The Young Ladies' Solidarity
Catholic Order of Foresters

Membership of Congregation 821



JUDGE SYDNEY FOX



ADVENTIST CHURCH



CHRISTY EPISCOPAL CHURCH



CONGREGATIONAL CHURCH



METHODIST CHURCH



*Have Your Linen Cleansed in
Pure Rock Creek Water. The
Best in the Rocky Mountains*

The Red Lodge Steam Laundry

Uses None Other

E. J. McLEAN, Proprietor



BILLINGS AVENUE, RED LODGE.

Northwestern Improvement Company



*Miners and Shippers
of the Famous
Rocky Fork
Coal*



*Commercial Shipments at Present
Conjined Practically
to Steam Coals.*

Red Lodge, Mont.

Banking House of Meyer & Chapman

The banking house of Meyer & Chapman is a copartnership consisting of W. F. Meyer and John W. Chapman without any limitation upon the individual responsibility of the members of the firm. This bank has done business since 1895, the same year that Carbon County was created.

F. H. Alden, the present popular cashier, has been with the bank since its beginning. F. W. Lyle, assistant cashier, has held his position since he came to Montana in 1899.

The bank has enjoyed a thrifty and constantly growing business. Probably no bank in Eastern Montana has the confidence of the business world in a greater degree. This is due not only to the character and financial worth of the members of the firm and to the conservative manner in which the bank's affairs are conducted, but also to the further fact that in periods of industrial depression and financial stringency they have never been compelled to crowd their borrowing clientele to pay up maturing loans, and in fact have frequently during such periods come to the relief of borrowers from other banks who were compelled

to find a new source of financial assistance because called upon for the money they owed at a time when it was hardest to raise it.

The bank has given especial attention to the business of farmers and stock growers of Carbon County, and ever stands ready to welcome the business of these robust industries of the county.

The bank has recently established the Bank of Belfry at the new town of Belfry, under the direction and control of J. O. Higham, who is an equal partner with Messrs. Chapman & Meyer in the new venture. The Bank of Belfry owns its own bank building, and with its new fixtures, presents a very attractive appearance. The State Bank of Park City is another recently established branch of the banking house of Meyer & Chapman, with a paid-up capital of \$25,000. B. M. Harris is the cashier of this new accession to Park City's business facilities.

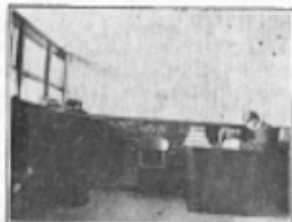
Messrs. Meyer & Chapman present this souvenir to you with cordial greeting, inviting you to bring your business to them and guaranteeing you fair and liberal treatment.



INTERIOR OF PARK CITY BANK



B. M. HARRIS
Bookkeeper Park City Bank



INTERIOR OF PARK CITY BANK



JOHN W. CHAPMAN



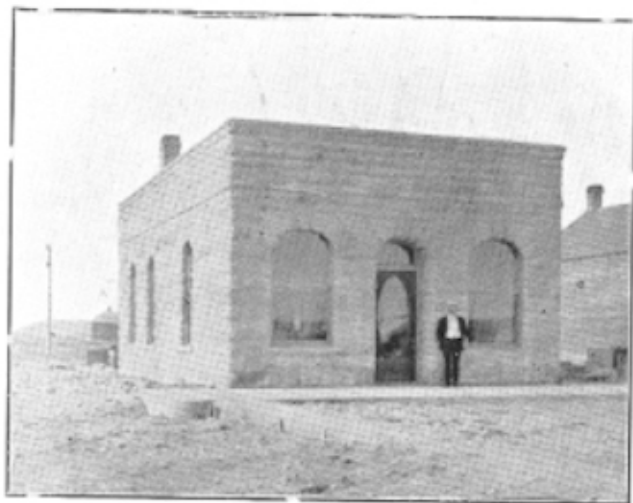
FRANK W. LYLE



F. H. ALDEN



INTERIOR OF BANK OF BELFRY



BANK OF BELFRY



ARMSTRONG LAKE NEAR RED LODGE



ST. AGNES CATHOLIC
CHURCH



FINNISH LUTHERAN CHURCH

Charles

H.

Hay



Patente and
Manufacturer of
The

Celebrated Hay Bridle

Factory and Showrooms
Billings Avenue, Between 11th and 12th Streets.

Red Lodge, Mont.



KARL EDELMUTZ

Dry Goods and Clothing
Ad on Another Page

Red Lodge Drug Company

... Dealers in ...

DRUGS

Stationery, Books, School Books and School Supplies, Cigars, Fishing Tackle, Seeds, Paints, Oil, Stock and Poultry Foods, Musical Instruments, Glass and Wall Paper.

Our Leaders:

Red Lodge Drug Co's. "Special" Cigars

McDonald's famous Chocolates

Palmer's Perfumes

Benn's celebrated Trout Flies

Edison Phonographs and Records

"Your money back" when not satisfied with goods purchased from us.

The Northern Hotel

THIS popular western hotel, now being enlarged, newly equipped and handsomely furnished, will be by far the finest hotel in the northwest and will contain 150 rooms with modern shower and tub baths, with its own ice plant and magnificent pipe organ designed and built especially for its foyer, elegant silver and dainty china, with its prosaic marble, exquisite tiles, handsome oriental rugs, and the majestic dome over its lobby, cannot other than excite the admiration of visitors and be a great pride to the State of Montana.

It is run on the European plan with rates from \$1.00 up with excellent cafe, private dining parlors, obliging employees and every effort is put forth to please its guests.

The Northern Hotel Co.

(Owners)

J. W. DOBBINS, Manager BILLINGS, MONTANA