

**THE
BITTER ROOT**

1954

THE BITTER ROOT

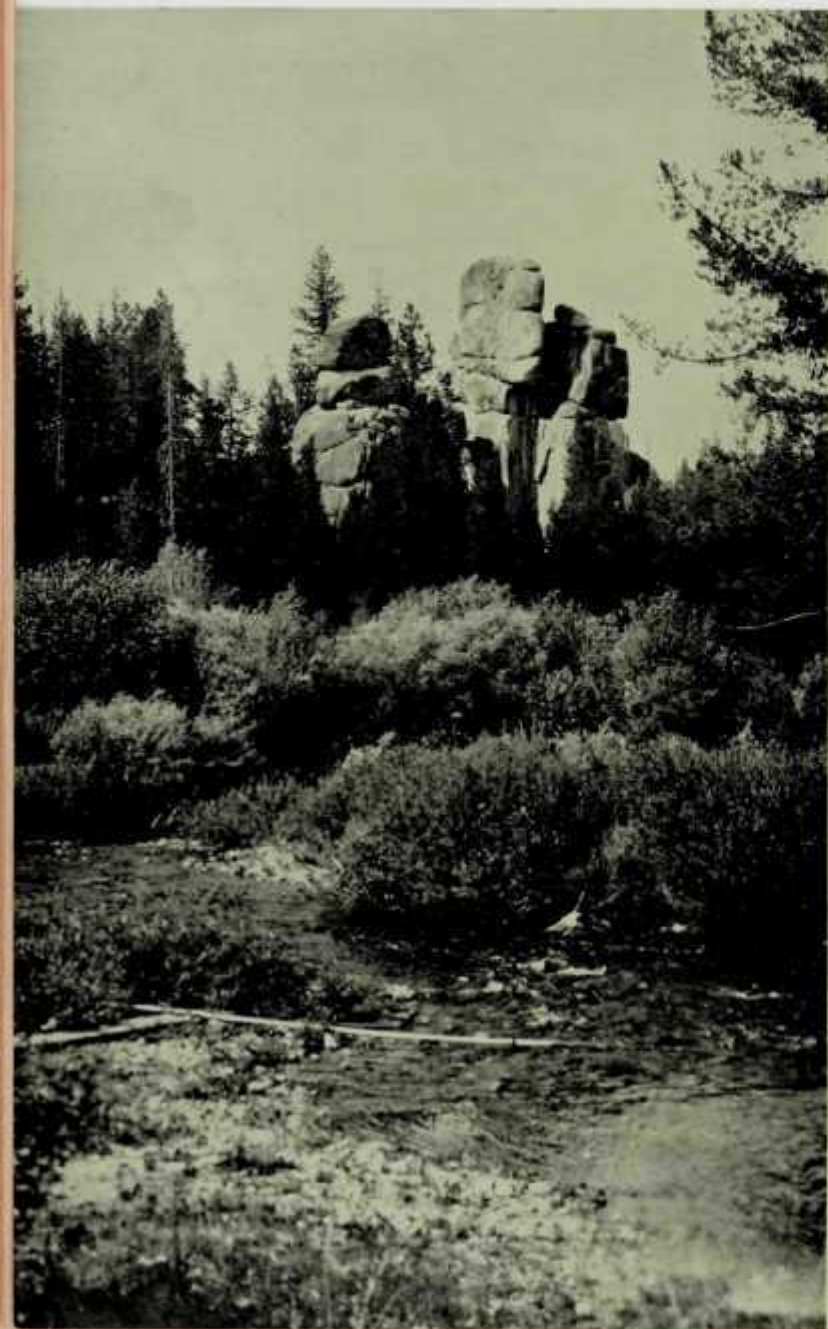
1935

Annual Publication of the Senior Class



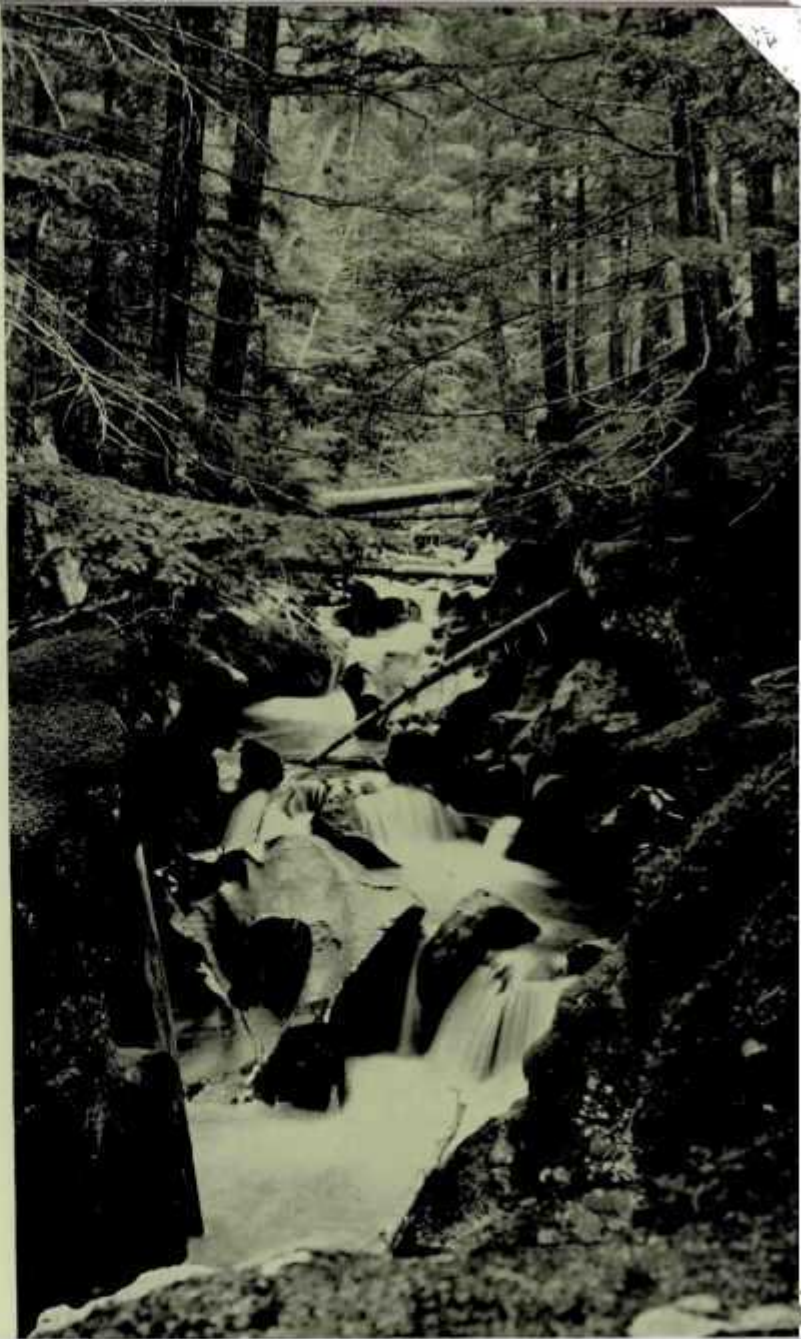
Missoula County High School

Missoula, Montana



*One of our Beauty Spots
—Lolo Hot Springs*

"Rustles of Spring"
Typical Mountain Brook



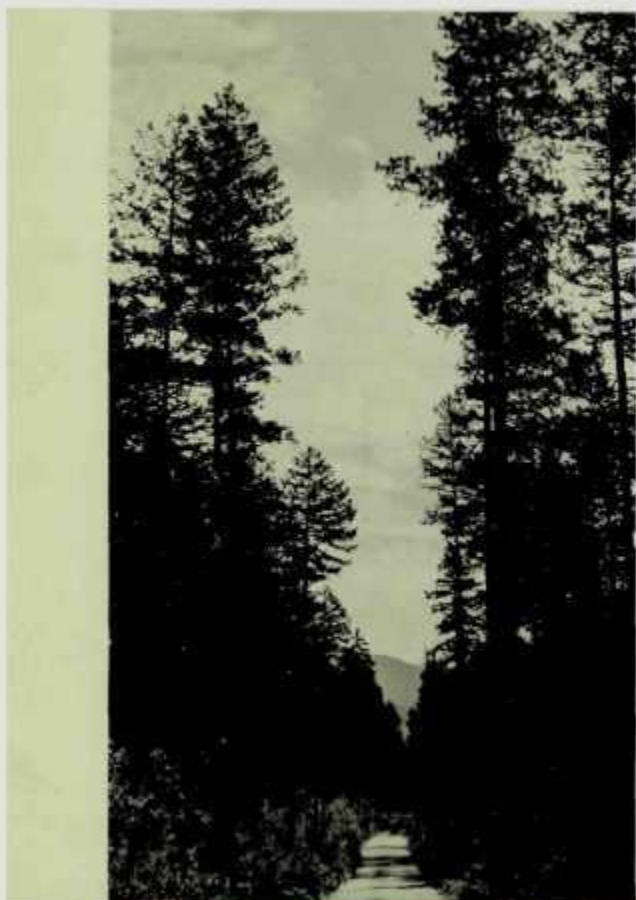
*A canopy of
overhanging branches
is outlined against
the beauty of
Hidden Lake*



FOREWORD

We hope that this issue of the BITTER ROOT will not be set aside as just another annual, but that it will be looked upon by the classes to come, as a trail-blazer, in that there has been no regular edition of the year-book for some time. . . . We have tried by combining modern features with school traditions to make this BITTER ROOT a true chronicle of school life.

---The Staff



*Stately pines line
one of memory's lanes
leading to the grandeur of
Swan Lake*



The refreshing coolness of Rattlesnake Creek is enhanced by swaying cottonwoods and stately pines

CONTENTS

FACULTY

CLASSES

ORGANIZATIONS

ATHLETICS

FEATURES

Sparkling waters of the Skalkaho tumble over the sheer rocks, forming a cascade of colors





*That grand old place
where work and
pleasure are combined*

DEDICATION

To Miss Mabel Irene Rich, who will this year terminate twenty-three consecutive years of faithful service as a faculty member, and through whose efforts our English Department has received nationwide commendation, we most affectionately dedicate our BITTER ROOT.

*Winter drapes the
trees with silver.
South entrance in
January.*



FACULTY



MR. G. A. KETCHAM
Principal

Class of 1935! Congratulations to you on your graduation and to the Sponsors and editors of this book for a very fine piece of work. It will be of interest for beyond your High School days. Good luck to you! G. A. Ketcham, Prin.

MISS MARGARET RONAN
Assistant Principal
Journalism, English

MISS NEVA COPELAND
Dean of Girls
English





MISS EILEEN BARROWS

English

MR. HARRY P. BUDEWITZ

World History

MISS MILDRED AMMER

French, English

MISS MINA I. CARR

Head—Commercial Dept.
Shorthand, Typing, Bookkeeping

MISS VIOLET M. BOILEAU

Spanish, English

MISS GERTRUDE CLARK

Head—Mathematics Dept.
Algebra, Solid Geometry,
Trigonometry, Geometry

MISS AGNES L. BROWN

European History

MISS KATHERINE CRAIGHEAD

English

MR. DUDLEY D. BROWN

General Science

MISS MARION DAVIS

Girls' Physical Education





MR. LESTER C. ENNIS

Drafting, Shop

MR. CHARLES M. HOMER

Farm Shop, Agriculture

MR. E. ARTHUR ERICKSON

Chemistry

MR. HAROLD J. HUNT

Algebra, Solid Geometry,
Geometry

MISS KATHRYN GEIGER

Librarian

MISS HETTIE HUNT

Head—Foreign Language Dept.
Latin

MRS. CARRIE E. GILHAM

Junior Business, Commercial
Arithmetic, Typing

MISS EDNA JACOBSEN

Algebra, Geometry

MISS MARY V. HARRIS

Public Speaking, Dramatics

MR. SAM B. KAIN

Coach—Boys' Physical Education





MR. FRANK T. KELLEY

Sociology, Economics

MISS EDNA A. MANN

Head—History Dept.
American History

MRS. FLORENCE M. KEETON

Shorthand, Commercial Geography

MRS. WINIFRED MUCKLER

English

MISS FRANCES LINES

Shorthand, Typing,
Bookkeeping

MISS LYLE M. NOBLE

English

MISS JEAN MORGAN MAIR

American History

MISS MILA M. PARKIN

Biology

MRS. ARMINDA McDONALD

English

MR. MILLARD E. PETERSON

Head—Science Dept.
Biology





MISS GLADYS PRICE

Music—Vocal and Orchestra

MR. GUY T. STEGNER

Commercial Law, Typing,
Bookkeeping

MISS AUDREY PROCTOR

Social Science, Algebra

MR. CRAIG L. SMITH

Algebra, Geometry, General
Mathematics

MISS MABEL I. RICH

Head—English Dept.

MISS HAZEL M. SWEARINGEN

English

MISS GRACE RYON

English

MISS ELSIE WADELL

Latin

MISS AGNES SCOTT

English

MR. PAUL E. WILSON

Physics





MAIN OFFICE



TROPHY ROOM

CLASSES

SENIORS

SENIOR CLASS HISTORY



Turner

Schaefer

Back in the fall of 1931 the thought of graduating in '35 seemed almost centuries away. But, here we are! So close to our goal that we can see it just ahead of us. Such a circumstance makes one sit down and think about all the things that have occurred during the eight semesters spent under the roof of Missoula High School. But when thinking back we remember that as the greenest of freshmen our first thrill of high school was cut short by the great fire that demolished our high-school-to-be. After a forced vacation we landed back in grade school. The classes

had been managed so that we hadn't mingled with the older students at all, and when our sophomore year started we entered our own building with no more sense of what to do than the freshmen.

As sophomores we were still rather young and it wasn't until our junior year that we united as a class and began to try out our wings. After choosing Fred Bedard as president, Marion Smith as vice-president, Ritchie Turner as secretary, and Mrs. Keeton as sponsor, we launched into a campaign to earn funds for the Junior Prom. Our first venture was the Barn Dance that has since become an annual junior affair. This was a social and financial success and showed the stuff the class of '35 was made of. Our biggest profit, however, we made by sponsoring the moving picture, "Berkeley Square."

The funds for the Prom swelled encouragingly and were completed by the dividends from the "Bubble Ball." This semi-formal had balloons galore and people with pins had great fun. Then the high spot of the year! One of the most colorful and artistic Junior Proms ever held was given in May, 1934. Thus our junior year was successfully drawn to a close and the final lap began in September. The first all-school affair, the annual Senior Mixer, started the year off right. Ritchie Turner, president; Dorothy Schaefer, vice-president; Tom Koch, secretary-treasurer; and Mr. Erickson, sponsor, composed the executive head of the class. Then came a campaign to see if the

seniors would support a drive for an annual publication, *THE BITTER ROOT*. The staunch members of this class stood by the ship and the plans came through with flying colors. In order to raise money for its production, the Senior Council, composed of Wilson Dobson, Sibel Taylor, Barbara Brinck, Norbert Donahue, Tom Hazelrigg, Donald Marshall, Fay Lubs, and Eugene Hall, arranged for a series of dime affairs. Eight old but famous films were shown in the auditorium for ten cents each. Matinee dances held in the lunchroom were popular, too. The Senior Spring Formal was the main social event of the class and everyone enjoyed himself.



Koch

Erickson



MARY JANE ADAMS

Junior Prom Committee 1;
Home Room Secretary 4.

OPAL WANDA ADAMS

Girls' Glee Club 3; Sextette
3.

JANE AMBROSE

G. A. A. 1, 2, 3, 4; Girls'
Club Cabinet 2, 4; Glee Club
3; Library Squad 4.

LILIAN AKIN

Student Council 2; Aquatic
Club 2; Vice-President 3.

MARTHA ANSHUTZ

EMALINE ANDERSON

Junior Prom Committee 3;
Girls' Club Milk Committee
3.

DOROTHY ARCHIBALD

Entered from Elliston 2;
Glee Club 2; Home Room
Secretary 3; Girls' Club Cab-
inet 3; Girls' Club Secretary
4; Pep Club 4; Library
Squad 4; Honor Roll 4.

MARY CATHERINE
AVERY

G. A. A. 1, 2, 3; "M" 3;
Student Council 3; Honor
Roll 4.

LOUISE BATEMAN

Spanish Club 4; Girls' Club
Milk Committee 4.

ELNORE BAIRD

Entered from Arlee 4; Honor
Roll 4.

CLIFFORD BERKY

Entered from Three Forks 3.

FRED BEDARD

Home Room President 2;
Senior Carnival 2; Glee Club
2, 3; Junior Class President
3; Assembly Program Com-
mittee 3; Pep Club 3, 4;
French Club 4; "Admirable
Crichton" 4.



JIMMY BESANCON

Honor Roll 1, 2, 3, 4; High Honor Roll 3; League of Nations Contest 2, 3; Home Room President 3; Quill and Scroll 3; President 4; Business Manager of Kappa 4; Assembly Program Committee 4; Band 4.

EDGAR BISSON**BRUCE BOYLE**

Honor Roll 1, 2, 3, 4; High Honor Roll 3; League of Nations Contest 3, 4; Radio Club 4; Library Squad 4.

MARY BRENNAN

Glee Club 3; Vandalville 3; Noodler Club 4.

**BILL BRENNAN****JAY BRIDGES**

Orchestra 1, 2, 3; Track 2.

**BARBARA BRINCK**

Entered from Butte 3; Honor Roll 3, 4; Junior Council 3; Spanish Club 3; Senior Council 4; Home Room Secretary 4; Girls' Club Cabinet 4.

WALTER BROULETTE

Football 2; Pep Club 4.

**CHARLES BULE**

Home Room Secretary 2; Stage Screws 3, 4; Stage Manager 4; Thespians 4.

CECIL BROWN

Entered from Drain, Oregon, 4; Band 4; Orchestra 4.

**JOHN CAMPBELL**

Home Room President 3; Basketball 3; Home Room Secretary 4; Football 4; M Club 4; Track 4.

GENEVIEVE CAROLL

G. A. A. 2, 3; Honor Roll 3; Spanish Club 4.



JOHN CHESLEY

Basketball 2; Swimming Squad 3; Aquatic Club 3; Honor Roll 4.



BERTRAM CHRISTIAN

Track 3; Spanish Club 3; Annual Staff 4.



FRANK CLAPP

Student Council 2; Junior Council 3; Interscholaric Golf Meet 1, 2, 3; Captain Applejack 3; "Admirable Cochran" 4.



VINCENT CLARIC

Orchestra 4; Band 4.



DOROTHY CLINGER

G. A. A. 1, 2, 3; Girl Reserves 1, 2; Kourab Staff 4; Honor Roll 4.



ROBERT CLARK

Honor Roll 1, 2, 3, 4; High Honor Roll 1, 2; Radio Club 2, 3; Stage Crew 2, 3, 4; Home Room Secretary 2; Home Room President 3; Boys' Glee Club 3, 4.

PAULINE COMPTON

Library Squad 4.

FRANCES COOK

High Honor Roll 1; Honor Roll 2, 3, 4; G. A. A. 1, 2, 3; Orchestra 2; Kourab Staff 3; President of Campus Group 3; Dean's Office 4; Girls' Club Cabinet 4.



JEWEL COON

Glee Club 1; Library Squad 4.

HOWARD COPENHAVER

F. F. A. 3, 4.



EDNA COTE

Glee Club 1, 2, 3; Nordica Club 1, 4; French Club 4.

MAY CREGO

Nordica Club 1; President 2; French Club 4; Girls' Club Cabinet 4.



ART CROGL

Entered from Seattle 4; Honor Roll 4.

ALBERT CROONENBERGH

Basketball 2, 3, 4; "M" Club 4.

GERALD CROWLEY

FRANCES CURRAN

G. A. A. 1, 2.

ANGELO DALCERRO

EARL DAHLSTROM

Mixed Chorus 5; A Cappella Choir 3, 4; Nordica Club 4; Boys' Quartet 4; Boys' Glee Club 4; "Pirates of Penance" 4.



ARSENIO DE LA PENA

Spanish Club 1; Glee Club 2, 3; President 4; Boys' Quartet 3, 4; A Cappella Choir 4; Nordica Club 4.

BESSIE DAVIS

Honor Roll 1, 3, 4; Spanish Club 2; French Club 4; Home Room President 4.

ELNER EDINSON

Honor Roll 3, 4; Glee Club 2, 3.

WILSON DOBSON

Honor Roll 1, 2, 4; Football 2; Track 2; Student Council 3, 4; Decorating Committee, Chairman 3, 4; Aquatic Club 3; Glee Club 4; Pep Club 4; Senior Council 4; Stage Crews 4.

BETTY DOWNING

Girls' Club Cabinet 4; Home Room Secretary 4.

NORBERT DONAHUE

Entered from Cutbank 2; Aquatic Club 2, 3; Swimming Squad 3, 4; Honor Roll 4; Senior Council 4; Stage Crew 4; "Neighbors" 4.



BETTE DRAEE

Entered from Alherton 4;
Glee Club 4; Orchestra 4;
Thespians 4.

JOHN DOYLE

Football 3.

MARGARET DUNSTAN

Home Roll 1, 3, 4; G. A. A. 1, 2, 3, 4; Vice President 2; Home Room President 2; Spanish Club 2; Library Squad 3; Aquatic Club Secretary 3, 4; French Club 4; Pep Club 4; Girls' Club Cabinet 4; Konah Staff 4.

WATSON DUTTON

Entered from Kalspell 4; Glee Club 4; A. Cappella Choir 4; "Admirable Crichton" 4; Boys' Quarter 4.

MARLICE ENGLAND

Entered from Sacred Heart Academy 3; Glee Club 3; One-Act Plays 3; "Mikado" Business Committee 3; Konah Staff 4; Student Council 4; Art Club President 4.

ELLEN ELO

Home Roll 1, 2, 3, 4; Girls' Club Cabinet 4; Drama Officer 4.

DAN FINDELL

Home Room Vice-President 2.

KATHRYN FLANNERY

Honor Roll 1, 2, 3, 4; Spanish Club 2; G. A. A. President 3; Home Room President 3; Girls' Club Cabinet 4; Assembly Program Committee 4; Pep Club 4.



ALBERTA FLATTEN

Entered from Virginia 4; Girls' Club Dance Committee 4.

ANNE FLEMING

G. A. A. 2, 3; Baseball 4; Gym Assistant 4, 5.

HOWARD FLINT

Student Council 2; Football 2, 3, 4; "M" Club 4; Spanish Play 4.

JOHN B. FLYNN

JOHN W. FLYNN

Entered from Loyola 2; Swimming Squad 2, 3; Aquatics Club 2, 3.

CHARLES FOLLMAN

Senior Carnival 3; Glee Club 4.

BILL FORMIS

Honor Roll 1, 2, 3, 4; Home Room Secretary 2, 3, 4; Christmas Play 2, 4; League of Nations Contest 3; Business Manager of Kivah 4; French Club 4; Quill and Scroll 4; "Admirable Criticism" Publicity 4; Stage Crew 4.

GEORGE FRAZER

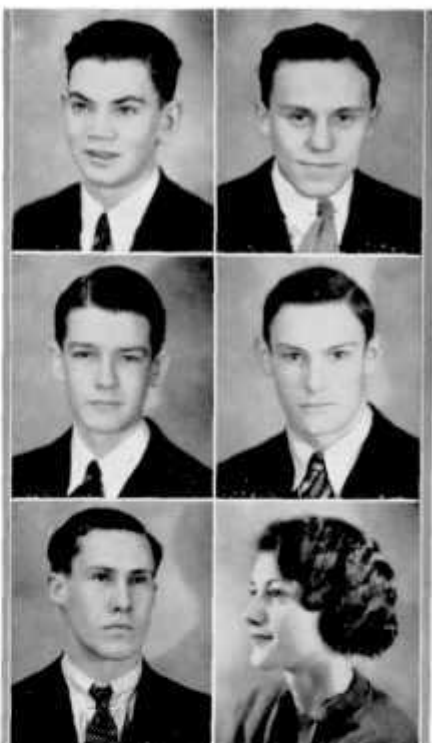
Entered from Roundup 3; Honor Roll 4; Home Room President 4; Senior Council 4.

JIMMY GAMBLE

Radio Club 2; Honor Roll 3; Stage Manager One-Acts 3; Declamation 3; Spanish Club 4.

GERALDINE GARVEY

Entered from Plains 2; Girls' Club Assembly 3; Pep Club 4; French Club 4.



JIM GEIL

Track 1; "A" Squad Basketball 2; Football 2.

POLLY GILHAM

Honor Roll 1, 2, 3, 4; Campfire Group 3; Girl Reserves 1, 2; G. A. A. 1, 2, 3, 4; "M" 4; Home Room President 2; Glee Club 3; Glee Club President 4; Assembly Program Committee 4; Dean's Office 4.

HARRY GRAVES

Glee Club 4; Nordic Club 4; French Club 4; French Play 4.

EVA GRANT

G. A. A. 1; Girl Reserves 1; Glee Club 4.

EUGENE HALL

Glee Club 3, 4; Honor Roll 4; French Club 4; Home Room Secretary 4; Senior Council 4.

CHARLOTTE HAINES



MARJORIE HARLAN

Library Squad 4.

HELEN HAMLTON

G. A. A. 1, 2, 3, 4; Student Council 3; Home Room Secretary 4.



VENETTA HAVLIK

Entered from Roundup 4; High Honor Roll 4; Annual Staff 4.

HALBERT HART

Honor Roll 1, 2, 3, 4; Student Council 2; Radio Club 4.



DOROTHE HEAD

G. A. A. 1, 2; Home Room Secretary 3; "Admirable Crichton" 4; "Neighbors" 4.

TOM HAZELRIGG

Honor Roll 1, 2, 3, 4; Tennis 1, 2, 3, 4; "M" 3; Boys' Glee Club 2, 3, 4; Home Room President 3; A Cappella Choir 4; Senior Council 4; Nordica Club 4.

LOUISE HICKMAN

Home Room Secretary 3; Honor Roll 3, 4; Spanish Club 4.

JOSEPH HOFFMAN



MARJORIE HOGAN

KENNETH HOLLENSTEINER

Deceased December 17, 1934.



KATHERINE HOPPER

G. A. A. 1, 2; Glee Club 1, 2; Home Room Secretary 2; Honor Roll 4; Girls' Club Cabinet 4; Girls' Club Candy Stand 4.

ALMA RAE HOLLOWAY

Entered from Harlingen, Texas 4; Honor Roll 4; "Admirable Crichton" 4; "Neighbors" 4; Thespians 4.



CELIA HOPPIE

KELFRID HOYLO

G. A. A.: 1, 2, 3, 4; Glee Club 2; "Nifty Shop" 2; Nordica Club 2.



DEVERNE HUCKABA

JACK HUGHES

Aquatic Club 2, 3; Swimming Squad 2, 3; 'M' 2; Home Room President 2, 3, 4; Assembly Program Committee 2, 4; Pep Club 3; President 4; Yell Leader 3, 4; French Club 4.



JAMES HUNTER

WILMA JACOBSON

Orchestra 2, 3, 4; Student Council 4.



MARGARET JAMEISON

MILDRED JANES

Girls' Glee Club 1; Nordica Club 1, 2, 4; Junior Glee Club 2; Girl Reserves 2, 3; Mixed Chorus 3; Office Squad 4; Library Squad 4; Dean's Assistant 4.

Library Squad 3; Glee Club 3, 4; League of Nations Contest 4.



GEORGE JENNINGS

SUE JEWETT

Swimming Team 2; Glee Club 4; Spanish Club 4; Home Room President 4.

Entered from Great Falls 4; Girls' Glee Club 4; Girls' Sextets 4; Nordica Club 4.



NORMA JOHNSON

ANITA JOHNSTON

Junior Prom Committee 3; Mixed Chorus 4; Library Squad 4.

Girls' Club Programs 1; Library Squad 4.



DORIS KEITH

Office Squad 4; Junior Prom Committee 3; Senior Mixer Committee 4.



LOUIS KINNEY



WILLIAM KLINE

Nordica Club 2, 4; Spanish Club 4; Glee Club 4.



HAROLD KOCH

Football 1, 2, 3, 4, "M" 4.



JOHN LANDGRAF

Track 1, 4; Football 3; "Crimson Coconuts" 4.



LORRRAINE LANG

Entered from Conson 2; Glee Club 2; "Nifty Shop" 2; "Neighbors" 4; Band 4.



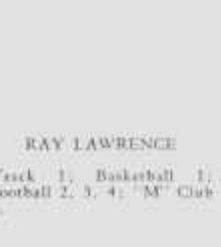
RAY LAWRENCE

Track 1; Basketball 1; Football 2, 3, 4; "M" Club 4.



SHIRLEY LEE

Home Room Secretary 2, 3; Junior Council 3; "Admirable Crichton" 4; One-Act Plays Committee 4.



MARGARET LEE

Glee Club 1; Girl Reserves 2; Aquatic Club 3, 4; Property Committee in Thespian Play 4.



LOIS LEMIRE

Entered from Polson 4.



LEONARD KUFFEL

Entered from Layola 2; Football 3; Track 3, 4; Honor Roll 4; Glee Club 4; A Cappella Choir 4; Radio Club 4; Band 4.



TOM KOCH

Honor Roll 1, 2; High Honor Roll 3, 4; Swimming Squad 2; House Manager "Mikado" 1; "The Valiant" 3; "Admirable Crichton" 4; Business Manager One-Arts 4; Senior Class Secretary 4; Thropians 4.



MARIE LIEN

Honor Roll 3, 4; Girls' Club Milk Stand 4.

FAY LUMS

Home Room Secretary 3, 4; Girls' Club Cabinet 4; Pop Club 4; Senior Council 4; Annual Staff 4; Library Squad 4.



AVIS LINTZ

Entered from Sweet Grass 4; Girls' Glee Club 4.

ELENORA McCAULEY

Honor Roll 1; Aquatic Club 3; Home Room Secretary 3; Library Squad 4.



ANGELA McCORMICK

Entered from Sacred Heart Academy 3; Glee Club 3; Senior One-Act Committee 3; Honor Roll 4; French Club 4; Home Room President 4.

MARY LOUISE McCAULEY

Mixed Chorus 3; Junior Prom Committee 3; Glee Club 4; "Dixie 40 Dance" 4.



ANTHONY McCUNE

Entered from Billings 2; Stage Manager 4; Little Theatre Tournament 4; Assistant Stage Manager "Mikado" 4; Thespian 4, 5; "Admirable Crichton" 3; "Cajunna Coconut" 5; Junior Council 3.

CHARLES McLURE

Football 1, 2; Track 1, 2; Swimming 3.

DONALD McKay

JOE McLAUGHLIN

Track 1; Swimming Squad 3; Aquatic Club 3.

GEORGE MABARY

WALTER MACE

Football Manager 1, 2, 3, 4; Basketball 1, 2, 3, 4; Football 2, 3; Track 2, 3, 4; Track Manager 2, 3; "M" Club 3, 4.



KATHRYN MACLAY

Home Room President 2;
Aquatic Club 3; Office Squad
4; Honor Roll 4; Spanish
Club Treasurer 4.

FRED MAGNUS

Radio Club 4; Spanish Club
4; Leader Harmonica Band
4; Library Squad 4; League
of Nations Contest 4; Konah
Staff 4.



MAYME MALYON

Entered from California 4.

GENEVIEVE MARKHAM

Entered from Salt Lake City
4.



LYDIA MARTELL

Junior Prom Committee 3;
Library Squad 4; Spanish
Club 4.

DONALD MARSHALL

Honor Roll 1, 2; High Honor
Roll 3, 4; Student Council
2; Forensic Club 2; Business
Manager Konah 3; Quill
and Scroll 3, 4; Senior Council
4; President French Club
4; League of Nations Contest
2, 3, 4.

DWIGHT MARIN

HAROLD MAST



BERNARD MELTON

DAVIS MEAD

Track 3; Spanish Club 2;
Aquatic Club 3, 4; Water
Polo Team 4.



DOUG MELTON

GEM MERCER

Pep Club 4; Swimming
Squad 3; Track 3, 4; Aquatic
Club 3.

Home Room Representative
1; Senior Carnival 3; Radio
Club 4; Pep Club 3, 4;
Home Room President 4.



ISABEL MESSER

Honor Roll 1, 2, 3, 4; G. A. A. 1, 2, 3, 4; Home Room Secretary 2, 4; Spanish Club 2, 4; Girls' Club Cabinet 2, 4; League of Nations Contest 3; Student Council 3; Quill and Scroll 3, 4; Editor of Konah 4.

ARTHUR MERTZ

Honor Roll 1, 2, 3, 4; High Honor Roll 1, 2; "Why the Chimes Rang" 2; League of Nations Contest 2; Home Room Secretary 2, 3; Junior Council 3; Konah Staff 4; Vice-President French Club 4; Editor of Annual 4; Quill and Scroll 4.



FRANCIS MOLLETT

Orchestra 1, 2, 3, 4, 5; Track 1, 2; Radio Club 1, 3; Glee Club 2; French Club 4, 5; Band 3.

ROY MILLER

Football 2; Track 2; Declamation Contest 2; Pep Club 4.

KATHRYN MONSON

EVERETT MIX

Radio Club 1, 2; Aquatic Club 3; Glee Club 4.



HELEN MORRIS

BILL MORSE

Track 2; Football 2, 3.

OSCAR MOY

HILDA MULLER

Track 1, 2, 3; Football 1, 2, 3; Basketball 2, 3.

Honor Roll 1, 2, 3, 4; Dean's Office 3; Library Squad 4.

BYRON MURPHEY

GEORGE MULVIHILL

High Honor Roll 1, 2, 3, 4; Home Room President 2, 3; League of Nations Contest 2, 3, 4; National Honor Society 3, 4; Football 3, 4; "M" Club 4.

Entered from Anasonda 2; Football 3; "M" Club 3; Track 3; Home Room President 3; Sports Editor Konah 3, 4; President Assembly Program Committee 3, 4; Editor Konah 4; Annual Staff 4.



HELEN NEAT

Band 4.

HOWARD NEFF

Track 1; Basketball 1, 2;
Home Room President 4.

ROBERT NELSON

Track 1, 5; Glee Club 3.

STANLEY NYBO

Basketball 2; Football 3, 4;
"M" Club 4; Track 4.

BOB OGG

Track 2; Interscholastic Golf
Team 3, 4.

BILL OEDER

Basketball 1, 2, 3, 4; Foot-
ball 2, 3, 4; Glee Club 2;
"M" Club 2, 3, 4.

AUSTIN OLSON

Honor Roll 1, 2, 3, 4; High
Honor Roll 2; Home Room
President 2; Second Prize
Architecture 2; Home Room
Secretary 3; Radio Club 3,
4; Glee Club 4; French Club
4.

VERNON OLSON

Basketball 1, 3, 4; Home
Room Secretary 2; Track 3,
4.

DOROTHY PARSONS

Glee Club 1, 2, 3, 4; Presi-
dent Home Room 2; Spanish
Club 2; Glee Club Accom-
panist 2, 3; Junior Council
1; "Mikado" 3; G. A. A. 3;
Honor Roll 4; Konah Staff 4.

LOIS PARKER

PHIL PAYNE

Honor Roll 1, 2, 3, 4; High
Honor Roll 1, 4; "Why the
Chimer King" 2; Interscholar
Declamation 3; Editor of Knit-
nah 4; French Club 4; Quill
and Scroll 4.

CHESTER PEAK

Glee Club 4.



SAOMI PEARSON

Glee Club Secretary 2, 3; "Mikado" 3; Girls' Club Cabinet 3, 4; Home Room Secretary 4.

RAY PERRY

Home Room President 1, 2; Football 1, 2, 3, 4; President "M" Club 3; Track 4; Basketball Manager 4; Pep Club 4; Fresh Football Coach 4; Assembly Program Committee 4; Property Committee "Admirable Crichton" 4.



EUNICE PINKNEY

Glee Club 3; "Mikado" 3; Third Place in Declamatory Contest 3; Student Council 4; Property Manager One-Acres 4; Girls' Club Cabinet 4; Konah Staff 4.

BOB PETERSON

Basketball 1, 2, 3, 4; Home Room President 3; Declamatory Contest 3; Pep Club 4.



ARVA DOROTHY PHELPS

Home Roll 1, 2, 3, 4; High Honor Roll 1; Girls' Club Cabinet 2, 4; Office Squad 3; Library Squad 3; Student Council 3; Home Room President 4; Annual Staff 4; Quill and Stroll 4; Konah Staff 4; Pep Club 4.

ED PETERSON

League of Nations Contest 3; Orchestra 4; Konah Staff 4.



KATHRYN POMAJEVICH CRIST POMAJEVICH

Home Roll 1, 3, 4; Office Senior Carnival 2; Squad 3.



BERNARD PRICE

Entered from Loyola 2.

BOB PRICE

Entered from Loyola 2; Football 2, 3, 4; Basketball 2, 3, 4; Secretary-Treasurer "M" Club 4; Track 4; Home Room Vice-President 2, 3.



CHARLES PURDY

JOE PRONOVOST

Entered from Polton 3; Basketball 3, 4; Track 4.



GLEN PURDY

Intercollegiate Golf Team 2, 3



MYRTLE RALSTON

Entered from Minneapolis 2; Honor Roll 3; French Club 4; Que Arts 4; "Neighbors" 4; Kappa Staff 4



JACK REGAN

Entered from Loyola 2; Swimming Team 2; Aquatic Club 2; Yell Leader 3, 4; Pep Club 3, 4; Assembly Program Committee 4



HEDTON REED

Home Room Secretary 2; Home Room President 3; Kappa Staff 3; Admirals' Crishton 4



JACK REYNOLDS

Football 1, 2, 3; Basketball 1, 2, 3, 4; Student Council 2, 3; "M" Club 3, 4



LAUREEN RENO

Girl Reserves 1; G. A. A. 1; Honor Roll 3, 4; Pep Club 4; Office Squad 4

GREGORY RICE

Entered from Loyola 2; Football 2, 3, 4; Basketball 2, 3, 4; Track 2, 3, 4; "M" Club 2, 3, 4; Home Room President 3; Second in Mile at National Trackmeet 2

MARION RICHIE

Entered from Mt. Ellis Academy 2; Honor Roll 2, 3; Kappa Staff 4; Library Squad 4



HAZEL ROBERTS

Baseball 1, 2; Basketball 1, 2; Re entered from Victor 4



ELBERT ROBINSON



ANNE ROWE

G. A. A. 1; Girl Reserves 1; Honor Roll 3; "Neighbors" 4; Christmas Assembly 4



HERBERT ROOT

Junior Prom Committee 3; Stage Society 4; Spanish Club 4



ALLAN RAMPSON

Home Room Basketball Team
1; Track 2.

JOHN RYAN



STANLEY SHAW

Honor Roll 1, 2, 3, 4; Track
2, 3, 4; Home Room Presi-
dent 2; Junior Council 3;
Football 3; Quill and Scroll
3, 4; Home Room Secretary
3, 4; President Student
Association 4; Editor of Konah
4; Glee Club 4; Assembly
Program Committee 4; Vice-
President Spanish Club 4;
Pop Club 4.

DOROTHY SCHAEFER

Glee Club 1, 2, 3; President
4; G. A. A. 1, 2; Senior
Carnival 2; Student Council
2, 4; Home Room Secretary
3; "Mikado" 3; Captain
Applejack 3; Pop Club 3,
4; Vice-President Junior
Class 4; French Club 4; A
Cappella Choir 4; "Pirates
of Penzance" 4.

JEAN SHOBLON

Honor Roll 1, 2, 3; G. A.
A. 1, 2, 3, 4; Declaration
Contest 1, 2, 3, 4; Library
Squad 2, 3; Dance Commis-
sions 2, 3, 4; Konah Staff 3;
Girls' Club Cabinet 3, 4;
Dean's Office 4; French Club
4.

GRIT HAWVER

Track 1, 2; Football 3; Glee
Club 4.



JOHN SHOTWELL

Entered from Hazlem 4;
Orchestra 4; Band 4.

FERNE SILVERTON

Declamation Contest 3; Glee
Club 4; Konah Staff 4; "Ad-
mirable Crichton" 4; French
Club 4; Senior Assembly 4;
Costumes for "Pirates of
Penzance" 4; One-Act 4;
Quill and Scroll 4.

JAMES SMITH

MARION SMITH

Honor Roll 1, 2, 3; Girls'
Club Cabinet 2, 3, 4; Vice-
President Junior Class 3;
Home Room President 3;
Junior Council 3; Editor of
Konah 4; Vice-President
Quill and Scroll 4; Secretary-
Treasurer of Thespians 4;
Assembly Program Commis-
sion 4.

RUTH SMITH

DICK SMITH

G. A. A. 1, 2.



RALPH SOLUM

Honor Roll 1, 2; Basketball 1, 2, 3, 4; Track 3; Assistant Manager Football 4; French Club 4.

BERT SOUCIE

Honor Roll 2.

ROBERT SPICHER

Entered from Hingham 3; Honor Roll 3, 4; High Honor Roll 3; One Act 3; Spanish Club 4; Assembly Program Committee 4; Home Room Secretary 4.

EDWIN STAHL

Mixed Chorus 3, 4; P. F. A. 3; Senior Carnival 2; Honor Roll 4.

JOSEPHINE STECK

MARIE STAVES

G. A. A. 1, 2; "Nifty Shop" 2; Glee Club 2, 3; Girls Club Cabinet 4; French Club 4; Konath Staff 4; Assembly Program Committee 4.

GARTH STEELE

HELEN STEWART

Entered from Pulson 4; "Neighbors" 4.

Honor Roll 1, 2, 3; High Honor Roll 4; G. A. A. 1, 2, 3, 4; "M" 4; Glee Club 2, 3; Girls Club Cabinet 4; Home Room Secretary 4.



MARI STOIANOFF

JANET STIFF

Glee Club 2; G. A. A. 2, 3; Office Squad 3; Aquatic Club 3; Art Club 3; French Club 4.

Glee Club Accompanist 2, 3, 4; Spanish Club 3; Pep Club 3, 4; "Mikado" 3; Assembly Programs 3, 4.

MIKE STOIANOFF

GORDON STOKKE

Home Room President 3; Track 3; Glee Club 4; "Pilgrimage of Penance" 4.

Radio Club 3; French Club 4; Honor Roll 4.

JENNIE STOVERUD

Honor Roll 1, 3; G. A. A. 1, 2, 3, 4; "Mikado" 3; Glee Club 1, 4; Library Squad 4.

BILL STROTSMAN

Christmas Play 2; Honor Roll 3; Glee Club 4; Stage Screws 4; "Pirates of Penzance" 4.



STACY STRUBLE

Entered from Loyola 2; Football 2, 3, 4; "M" Club 4.

GARDENA SWANBERG

Girl Reserve 2; Koma Staff 3.



HELEN SWANSON

Honor Roll 1, 2; High Honor Roll 3, 4; Library Squad 4; Teacher's Assistant 4.

ALICE SWARTZ

Office Squad 3; Junior Class Committee 3; Vandeville 4.



ROLAND TABOR

MAUDIE TAGGART

Teacher's Assistant 4.



PHYLLIS TAGGART

MAURICE TAPLETT

Chairman of Girls' Club Milk Committee 4.



FRANK TAYLOR

SIBYL TAYLOR

Track 2; Agriculture Club 3, 4.

Honor Roll 1, 2, 3; G. A. A. 1; Home Room Secretary 3; Pop Club 4; Senior Council 4; Student Council 4; Quill and Scroll 4; French Club 4; Koma Staff 4.



HARRELL THOMPSON

Student Council 2; Football 2, 3, 4; "M" Club 4; Home Room President 4.

MARGARET THIME

Glee Club 1, 3; Girls' Club Cabinet 2, 3; Home Room Secretary 3; Library Squad 3, 4; French Club Secretary 4.



JACK THOMSON

Home Room Secretary 2; Pep Club 4.

KENNETH THOMPSON

Honor Roll 1; Track 1; Home Room President 2; Orchestra 2, 3, 4; Kanh Staff 4; Bugle Corps 4.



ART THURMAN

Football 2; Agriculture Club 3, 4.

GLADYS THURSTON

EFFA TILZEY

Glee Club 1; Library Squad 3; Home Room President 3.

JOHN TIMM

Honor Roll 2, 3, 4.

MARYBETH TONEY

Honor Roll 1, 2, 3, 4; Officer Squad 3; Library Squad 4.

ALPHONSO TONACAO

Entered from Willow Creek 3.

GENE TRENARY

Track 1; Basketball 1; Student Council 2; Football 2, 3, 4; Home Room Secretary 3; Kanh Staff 4.

DOROTHY TRUXLER

"Mikado" 3; Glee Trio 3; Glee Club Accompanist 3, 4; "Pirates of Penzance" 4; Home Room President 4; A Cappella Choir 4; Mixed Quartet 4.



RITCHIE TURNER

Honor Roll 1; High Honor Roll 2; Radio Club 2; Home Room President 2, 4; Student Council 3; Secretary Junior Class 3; Assembly Program Committee 4; Senior Class President 4; French Club 4; Glee Club 4.

BUD TURNER

Honor Roll 1, 2; Senior Carnival 2; Glee Club 2, 3, 4; Boys' Quartet 3; Junior Council 3; Home Room President 3; Konah Staff 3; Stage Screws 3, 4; Stage Manager 4; Pep Club 3, 4; Thespians 4; Annual Staff 4.

BILL VITT

Aquatic Club 3; Pep Club 3, 4, 5; Glee Club 4; Swimming Team 4.

PAUL VAN OSTRAND

Mixed Chorus 3; F. F. A. 4; Glee Club 4.

CATHERINE WALFORD

SARA WADELL

Honor Roll 3; High Honor Roll 1, 2, 4; Office Squad 2; Student Council 2, 3; Girls' Club Cabinet 2, 3, 4; Library Squad 3; Student Council Secretary 3; Girls' Club Vice-President 4.



GEORGE WALKER

EVELYN WATSON

KATHLEEN WATSON

NORMA WATSON

Entered from Ontario, Canada.

MYRL WEIKEL

KAYMOND WEIKEL



GEORGE WEISEL



JON WEISEL

French Club 4; "Admirable Crichton" 4.



BILL WILCOX

"Admirable Crichton" 4; Thespians 4.



RUTH WILBUR

G. A. A. 1; Glee Club 1, 2, 3, 4; Girls' Trio 3; "Mikado" 3; Home Room Officer 1, 4; Mixed Quartet 4; Girls' Glee 4; Dep. Club 4; A Cappella Choir 4; Girls' Club Cabinet 4.



TANA WILKINSON

High Honor Roll 1, 2, 3, 4; Declamation 1; League of Nations Contest 2, 3; Spanish Club 2, 4; Girls' Club Cabinet 3, 4; Quill and Scroll 3, 4; Kinah Staff 3.



EDNA WILSON

Home Room Officer 2, 4; Girls' Club Cabinet 3; Office Squad 3; Aquatic Club 3; Nordic Club President 3; Honor Roll 3, 4; Student Council 4.

ELSIE WOLFENBARGER

Entered from Superior 4.

DONALD WOLD

Home Room Officer 1; Track 3, 4.



HARRY WOODEN

AUGUST ZADRA

Basketball 1; Football 1, 2, 3, 4; Captain 4; All-State 3, 4; "M" Club 2, 3, 4; Vice President 3; Home Room President 2, 3, 4; Track 3, 4; Vice President Student Association 4.



JUNIORS



Fritz



Kennedy



Watts



Keeton

JUNIOR CLASS HISTORY

The juniors have made a great success of their first three years in Missoula High. This peppy class supported all school activities with great enthusiasm, holding up especially well their end of the social goings-on by giving dances, parties, and club programs and cooperating in the other class presentations.

Organizing as sophomores with Miss Swearingen as sponsor and Charlotte Fritz, Guy Rogers, Marian Hawker and Mildred Robinson as officers, the class of '36 started things going with a series of matinee dances. The high-light of that year was a Valentine assembly which showed the real talent the class possessed.

As jolly juniors they opened their year of activities by selecting Mrs. Keeton for sponsor, Charlotte Fritz, president; Valerie Kennedy, vice-president; and Gordon Watts, secretary. As the first number on their program, they gave the students the Barn Dance, a colorful hill-billy get-together on October 19th. It was a success both financially and socially. Being an enterprising class they worked out a way to make money that was new to M. H. S. At two of the major football games during the fall, the rooters were kept warm by mustard-smearing hot dogs for 10c. During November, Alexander Dumas' film production of "The Count of Monte Cristo" was sponsored by the class of '36 and the profits reaped ended their financial worries for the Junior Prom. So they settled down to give the school some high-class entertainment. On December 21st a Christmas party was enthusiastically attended by students seeking a good time. After two months of inactivity the juniors presented one of the prettiest dances of the year, the annual Bubble Ball. Silver and black balloons cleverly concealed the ceilings of the lunch room and first floor corridor, and paper hats added a festive touch to the occasion.

After a busy year spent in raising funds and making preparations for the event, the date for the Junior Prom arrived. On May 24th the seniors were honored at one of the loveliest Proms in the annals of the school. Beautiful decorations and dreamy music provided a good time for all.

The juniors have truly distinguished themselves in high school life both as a group and individually. They are well represented in each phase of sports and in all the clubs and societies. There is every indication that they will be one of the most outstanding senior classes that M. H. S. has ever boasted.

Kenneth Ackertund

Bob Adams



Bud Aldrich

Mary Jane Alkire

Stanley Ames

Billy Anderson



Jean Anderson

Dick Andrews

Majorie Ruth Arnold

Carl Ashford



Edith Bandy

Elmer Barrett

Bert Bartlett

Jerome Bauer



John Bauer

Frances Bench

Leonard Bergset

Lyla Burtman



Carol Bennington

Bruce Blahnik

Charlotte Brauer

Louise Brodie



Bernice Brown

Gontien Brown

Frank Bryan

Jane Buckhous



Leland Buker

Richard Bush

Lyle Calhoun

Jack Childrey



Wilma Christensen

Donald Clapper

Helen Clark

Leonard Clevenberg



Virginia Clinkingbeard

Virginia Clure

John Coates

Walter Coombs



John Coleman

Charles Crane

Vern Crain

Krest Cyr



Audrey Darrow

Lyman Darrow

Arden Davis

Walter Dickman



Mary Alice Dickson

Jean Dickson

Mabel Dobrovolny

Walter Dodd



Conrad Doering

Robert Doney

Charlotte Dool

Mary Helen Dratz



Ruth Eastman

Christina Elder

Marion Evans

Philamon Evans



Sylvia Evjen

Eva Farmer

Joy Farnham

Ralph Figg



Charlotte Finley

Eleanor Fisher

Anne Marie Forssen

Charlotte Fritz



Steve Gajan

Margaret Garrahan

Marjorie Ganzhorn

Edwin Germann



Pat Griffin

Marjorie Gilder

John Gillin

Bernard Girson



Margaret Gove

Louise Gregory

Ernest Grindley

Helen Hackman



Jack Haines

Bill Hait

Grace Hamilton

Clifford Hanson



Harold Hanson

Evelyn Harnish

Antoinette Harris
Ernadine Harrison



Jeanette Harroun
Irvin Haswell

Marian Hawker
Margaret Hayes



Joe Haytin
Stanley Healy

Elmer Heisel
Dorothy Hemingway



Helen Heydorf
Royal Hickman

Earl Hiatt
Mary Alice Hightower



Tyra Hill
Iris Henkle

Margaret Howard
Charles Hulse



Frank Inman
Ruby James

James Johnson
Wade Johnson



Arnold Karkanan
Marjorie Keas

Neva Keith
June Kellerman



Catherine Kelley
Don Kendall

Bill Kennedy

Valerie Kennedy



Irene Kenneth

Arthur Kimball

Gerald Kinzel

Walter King



George Klose

Colby Knapp

Ruth Knapp

Bonnie Kohler



Sidney Kraabel

William Kraft

Robert Kramer

Leo Kritzer



Helen Kulstad

Lachlan Lennox

Hugh Leonard

Irene Lewis



Irene Lincoln

Angeline Loran

Margaret Lovely

Mabel Lundberg



Gladys Luedke

Phyllis Lytle

Barbara Ann Mahrt

Bob Manley



Dorothy Marin

Margaret Martin

Jack Martinson

Bill Mason



Maxine Maxson

Betty McBride

Jim McCauley

Jewell McBride



Marjorie McClain

Billy Macday

Ruth McCullough

Loyola McDonald



Lorene McMillan

Esther McNorton

Alison Merriam

Clyde Miller



Dorothy Miller

Eileen Miller

Frances Miller

Lucille Miller



Mary Lou Milne

Margaret Minty

Arnold Mitch

Joe Mitch



John Moon

Ed Morris

Carolyn Morse

Gilbert Myers



Roy Myklebust

Bud Myrdal

Gertrude Neff

Paul Neff



Barbara Nelson

Esther Nelson

Bob Nickolson

Marie Nyberg



Bob Nybo

Arnold Olson

Jack O'Neil

Lorraine Page



Bob Parker

Jimmie Peak

Burton Perry

Mildred Perry



Harry Peterson

Lulu Pinkerton

Edwin Poulsen

Dale Price



Conrad Priess

James Quinn

Donald Ramer

Olga Ranta



Richard Rascob

Marie Ray

Ruth Reed

Elizabeth Ressler



Conrad Richlie

Leon Rivin

John Robbins

Mildred Robinson



Guy Rogers

Herman Rogers

Joe Root

Wallace Ross



Dick Roth

Mary Lou Rothenberg

Ed Russell

John Sager



Mercedes Salsbury

Dick Schipporeit

Herbert Searles

Ada Shaw



Edna Shields

Ralph Shortliff

Phyllis Shotwell

Beulah Smith



Gean Smith

Glynette Smith

Lucille Smith

La Verne Smith



Ernest Solum

Inez Sparks

Wilbur Stage

Loran Stanfield



Jack Steck

Neil Steinman

Gertrude Neff

Paul Neff



Barbara Nelson

Esther Nelson

Bob Nickolson

Marie Nyberg



Bob Nybo

Arnold Olson

Jack O'Neil

Lorraine Page



Bob Parker

Jimmie Peak

Burton Perry

Mildred Perry



Harry Peterson

Lulu Pinkerton

Edwin Poulsen

Dale Price



Conrad Priess

James Quinn

Donald Ramer

Olga Ranta



Richard Rascoff

Marie Ray

Ruth Reed

Elizabeth Ressler



Conrad Richlie

Leon Rivin

John Robbins

Mildred Robinson



Guy Rogers

Herman Rogers

Joe Root

Wallace Ross



Dick Roth

Mary Lou Rothenberg

Ed Russell

John Sager



Mercedes Salisbury

Dick Schipporeit

Herbert Searles

Ada Shaw



Edna Shields

Ralph Shotliff

Phyllis Shotwell

Beulah Smith



Gean Smith

Glynette Smith

Lucille Smith

La Verne Smith



Ernest Solum

Inez Sparks

Wilbur Stage

Loran Stanfield



Jack Steck

Neil Steinman

Margaret Sterling

Dorothy Stetson



Lola Stickler

Robert Stover

Ralph Swanberg

Francis Swartz



Jim Thane

Leo Thomas

Maxine Thompson

Ethel Thompson



Tyler Tom

John Toole

Bob Tubbs

Gerald Tucker



Steve Turi

Claire Tuxbury

Marguerite Tweto

Inez Ulsaker



Betty Mae Ulrigg

Dorothy Van Cleave

Robert Vickers

Vernon Vinson



Geraldine Vittorie

Rube Vollrath

Irvine Ward

Marie Wargin



Duane Watters

Gordon Watts

Donald Waugh

Frances Whaley



Norma Wheatley

Margaret Wheelbarger

Margaret White

Phillip Weiler



Ruth Wilkinson

Helen Wills

Virginia Wold

Clifford Wood



Joe Woodworth

Donovan Worden

Audrey Wymore





LIBRARY



STUDY HALL

SOPHOMORES

Normandeau



Grace



Hames



Swearingen



SOPHOMORE HISTORY

The sophomores have been one of the most active groups of underclassmen Missoula High School has had for several years. The class of '37 started the season by choosing Miss Swearingen as sponsor and electing officers: Blaine Normandeau, president; Victor Grace, vice-president; Eugene Hames, secretary. An executive committee composed of Marie Brown, Vianna Calloway, Norman Streit, Tom Woods, John Stewart, Carl Gulley, Bud Blanchette, Mary Mooney, and Effiellen Jeffries represented the home rooms.

The first sophomore party, a matinee dance in the lunch room February 15, was so well attended by the second year students that a series of them were planned and given in the spring months. Only sophomores were invited to these frolics, but they were enjoyed as much as all-school dances.

With the proceeds from these entertainments the sophomores extended their courtesy to the freshmen by honoring them at an informal spring party. Entertainment in the form of a program of songs and skits, followed by refreshments, constituted the first half of the party. The rest of the evening was spent in dancing, and the underclassmen departed after a thoroughly enjoyable time.

The sophomores are well represented in our school's sports, as Blaine Normandeau and Victor Grace played on the football squad, taking active part in the major games of the season, and Walter Hensolt shows good prospects as a valuable squad man. Bud Miller, Luther Weikel and Kenneth Kizer have played in minor basketball games. Emory Plummer distinguished himself on the track squad, and promises to be even better material in his next two years.

Thus the sophomores have made a flying start on their high school career. We hope they have even more success in their junior and senior years!



FRESHMEN

Murphy



Stine



Pew



Davis



FRESHMAN CLASS HISTORY

The freshmen started their activities as a class early by organizing in their first year, which has not been done in Missoula High School for several years. After selecting Miss Marion Davis as their class sponsor, they elected Dorothy Ann Murphy, president; Bill Stine, vice-president; and Charles Pew, secretary.

Not yet into the social sway of affairs, the freshmen did not hold any parties of their own but gave their support to other all-school functions. Many of their class members distinguished themselves by taking part in school activities. The boys turned out in large numbers for football, basketball, and track, and one of them, "Cub" Potter, played on the football and basketball squads, earning his "M" in his first year, an unusual honor. The girls, too, responded, strengthening the G. A. A. teams and displaying great enthusiasm in assembly programs and Girls' Club presentations.

The freshmen have begun their four-year career with remarkable class spirit and determination. Congratulations to this peppy younger group and the flying start they have made!



ORGANIZATIONS



Dobson, Payne, Haztrigg, Marshall, Watts, Olson, Murphey, Clark, King, Turner, Taylor, Mertz, Shaw, Stewart, Koch, Spicher, Messer, Wilkinson, Furbis, Regan, Boyle, Archibald, Flannery, Swanson, Beech, Cook, Wilson, Besancon, Elio, Havlik, Gilliam, Phelps, Brinck, Wadell, Holloway, Sjoblom, Muller, Toney, Dunstan, Wilbur.

NATIONAL HONOR SOCIETY

The purpose of the National Honor Society is to provide recognition for those students who have distinguished themselves in scholarship, service, and character. These students are in the upper third of their graduating class and only fifteen per cent of the seniors were chosen.

At the annual Honor Society assembly in March, thirty-nine students were selected for membership, two being Juniors. Miss Edna Mann is the sponsor of this thirteenth chapter and Miss Frances Lines is the secretary.

QUILL AND SCROLL

Quill and Scroll is the international honorary society for high school journalists. To be eligible for the organization one must be superior in some phase of journalistic work and in the upper third of his class scholastically.

At the first business meeting of the year, Jimmy Besancon was elected president; Marion Smith, Vice-president; and Tana Wilkinson, secretary. Mrs. M. A. Lund acted as sponsor during the absence of Miss Margaret Ronan.



Phelps, Payne, Coombs, Marshall, Furbis, Taylor, Messer, Mertz, Smith, Besancon, Wilkinson, Shaw



Turner, McCune, Koch
 Clinger, Dutton, Drake
 Holloway, Bala, Smith, Wilcox, Cape

THESPIANS

As there were only two members in the dramatics society at the beginning of the year, the election of officers was postponed until after an initiation, held in January. Bill Wilcox was elected president and Marion Smith, secretary-treasurer.

Among this year's Thespian productions are "The Admirable Crichton," "The Pirates of Penzance," and two groups of one-acts. The casts and committees of "The Admirable Crichton," and "The Pirates of Penzance" were honored at a dance following the presentation of the latter operetta.

STAGE SCREWS

The Stage Screws is an organization of boys who assist school clubs and societies in staging their assembly programs and plays. As they always work behind the curtains they go unnoticed by the majority of the students, but are really more indispensable than many other better-known groups.

There are no officers in the Stage Screws, as it is not organized as a club. The boys work on their own initiative under a stage manager and the dramatics instructor, Miss Harris.



McCune, Turner, Bala, Dobsen, Thanz, Root
 Kennedy, Forbis, Clark, Donahue, Strouthman



Payne, Stokke, Marshall, Solum, Muffert,
Mertz, Forbis, Turner, Bedard, Olson, Toney, Graves
Cote, Darrow, Thieme, Taylor, Garvey, Davis, Cergo, McCormick, Schaefer
Stoianoff, Staves, Miss Ammer, Kalstan, Shobblom, Widell, Dunstan

FRENCH CLUB

The "Cercle Francais" was organized to provide entertainment combined with practical achievement in the use of French. The sponsor is Miss Ammer, and the 1934-35 officers were: president, Donald Marshall; vice-president, Arthur Mertz; secretary, Margaret Thieme; and treasurer, Philip Payne.

Special programs were arranged for Hallowe'en and Christmas. An all-French assembly program of slides, music and a play was presented in March. The forty French Club members said their "au revoirs" at a final picnic meeting.

SPANISH CLUB

The Spanish Club met on the second of October for the first time in two years, due to the absence of Miss Boileau, sponsor. The club elected as officers: Robert Spicher, president; Stanley Shaw, vice-president; Tana Wilkinson, secretary; Kathryn MacLay, treasurer.

Meeting every two weeks, the society celebrated Christmas with an entertaining party, sponsored an assembly program in early February, and ended the season with the traditional spring picnic.



Dickson, Marrell, Flint, Carroll, Clinkingbeard, Ressler, Gore, Bennington
Magaus, Miss Boileau, Hickman, MacLay, Kline, Risor, Dratz, Jennings
Shaw, Messer, Wilkinson, Spicher, Smith, Haywell, Gajan



Rogers, Campbell, Jacobsen, Flint, Oeder, Figg, L. Potter,
 Murphy, Grace, Struble, Russell, Lawrence, Thompson, Reynolds, Price, Barrett,
 Mulvihill, Searles, Robinson, Nybo, Rice, Normandie
 Perry, Maco, Zaitz

"M" CLUB

The "M" Club, composed of lettermen in any of the major sports, football, basketball, or track, elected Greg Rice, president; Guy Rogers, vice-president; and Bobby Price, secretary-treasurer, in its first meeting in December. George Mulvihill, president of the Assembly Program Committee, was chosen to represent the club in that body.

A dance after the Butte-Missoula basketball game in January was the first entertainment of the year sponsored by the club. The lettermen were placed in charge of the ticket sale for the "Bubble Ball."

PEP CLUB

The Pep Club has kept the school spirit high this year by conducting pep assemblies before the major football and basketball games, and by leading the cheering at these events. They also took charge of the ticket selling and ushering, even printing programs on one occasion.

The most important step taken in the club activities was framing the constitution, which will go into effect next year. This year's officers are: Jack Hughes, president; Janet Stiff, secretary; and Dorothy Schaefer, vice-president.



B. Kennedy, Vitt, Thomson, Hammond, Mr. Hunt, Melton
 Reno, Lubi, Mercer, Peterson, V. Kennedy, Perry
 Page, Taylor, Schaefer, Wilbur, Robinson, Stiff, Broulette
 Miller, Garvey, Dobson, Eastman, Bedard, Flannery, Turner, Forssen
 Shaw, Phelps, Hughes, Archibald, Regan, Dunstan, Aldrich, Wheelburger



Schroeder, Harnish, Deason, Stahl, Swanberg, Van Ostrand, Williams
 B. Hiatt, Fleming, J. Flynn, Heibel, Tucker, Steck, Cuplin
 Mr. Homer, D. Ryan, J. Ryan, Copenhagen, Bauer, E. Flynn, E. Hiatt

FUTURE FARMERS OF AMERICA

The Missoula Chapter of the Future Farmers of America, sponsored by Mr. Homer, and with Crist Pomajevich, president; John Ryan, vice-president; Edwin Stahl, secretary, and Earl Hiatt, treasurer, has completed a busy year.

With the proceeds from two dances and a turkey shoot the club gave a district meet in April, featuring agriculture judging and athletic competition, and next year's officers were installed for the district, replacing Howard Copenhagen, president, and Jack Steck, secretary.

RADIO CLUB

The Radio Club has followed an interesting schedule of activities for the last year, making visits to nearly all the points of technical interest in Missoula. The Wilma Theater, telephone building, and radio station were included in the club's program.

At the end of the term the picnic, an annual event, was held. The officers are Donovan Worden, president; Lowell Artus, vice-president; and Clifford Cyr, secretary-treasurer. Mr. Wilson is faculty adviser.



Mr. Wilson, Kaffel, Boyle, Worden, Ames,
 A. Mitch, Olson, Woods, J. Mitch, MacLay,
 Cyr, Hart, Kester, Vickers, Nelson, Artus



Shaw



Ennis



Zadra

STUDENT ASSOCIATION

The purpose of the Student Association is to provide a way for the students to cooperate in supporting school activities. With the membership card of the organization each student can see all football and basketball games, receive the school paper, and obtain admission to school functions where identification is necessary.

The officers for this year are: Stanley Shaw, president; August Zadra, vice-president; Mr. Ennis, permanent treasurer.

GIRLS' CLUB

Consisting of all the girls in high school, the Girls' Club is one of the largest organizations. Its 1934-35 officers are Polly Gilham, president; Sara Wadell, vice-president; and Dorothy Archibald, secretary.

The three annual parties given were the Co-Ed Prom, the Christmas Kid Party and the Girls' Club Dance. The food used as admission to the Kid Party was distributed to the needy at Christmas.

The Mothers' Day tea, in honor of the students' mothers, closed the year's activities.



Archibald



Gilham



Wadell



E. ERICKSON
FACULTY ADVISER



ARTHUR MERTZ
EDITOR-IN-CHIEF



BUD TURNER
BUSINESS MANAGER

THE
BITTER ROOT
STAFF



ARVA DOROTHY PHELPS
ASST. EDITOR



FAY LUHS
SNAPSHOT EDITOR



VENEITAH HAVLIK
TYPIST



GEORGE MULVIHILL
SPORTS EDITOR



BERT CHRISTIAN
ARTIST

THE KONAK



Beacon, Bus. Mgr.; Messer, Editor; Shaw, Editor; Smith, Editor; Mulvihill, Sports
 Metz, Ads; England, Features; Fuchs, Ads; Taylor, Circulation; Richie, Reporter
 Payne, Personals; Phelps, Ads; Coombs, Ads; McCallough, Reporter; Booth, Reporter
 Pinkney, Features; Gamble, Features; Silverton, Reporter; Paterson, Reporter; Jewett, Reporter

THE KONAH

WEDNESDAY, MARCH 21, 1934
 VOL. 11, NO. 12
 PAGES 1-8



Payne, Editor; Magnus, Correspondent; Forbes, Bus. Man.; Mulvihill, Editor; Miss Margaret Ronan, Adviser
 Dunstan, Ads; Clinger, Features; Dickson, Reporter; Fritz, Circulation; Wheelbarger, Ads
 Hughes, Features; Minty, Ads; Treanor, Reporter; Dratz, Ads; Thompson, Features
 Parsons, Personal; Gamble, Correspondent; Mattson, Reporter; Staves, Features; Rabston, Reporter



ORCHESTRA

The orchestra has formed an indispensable part of nearly all the musical presentations this year. Under the able supervision of Miss Gladys Price they lent a beautiful touch to the Christmas cantata. Their versatility was shown by the professional ease with which they interpreted our national anthems at the Armistice Day assembly and by the performance at the February concert. The spring operetta, "The Pirates of Penzance," as well as the Baccalaureate and Commencement services, were greatly enhanced by the support given by the orchestra.

The year's officers were: Conrad Priess, president; Barbara Mahrt, secretary-treasurer; Charles Hulse, accompanist.

STRING QUARTET

The string quartet consists of four violinists, selected from the orchestra, who practice every Friday under the direction of Miss Gladys Price, music instructor. The quartet has worked mainly in conjunction with the orchestra, and has therefore been featured in nearly all its programs. Besides this they played "O Little Town of Bethlehem" and "The First Noel" in the Christmas cantata, and presented selections in the spring concert.

The members of the quartet are Conrad Priess, Bob Parker, Audrey Darrow, and Walter King.





MIXED CHORUS

The mixed chorus elected Bill Kennedy for its president and Alice Hightower as its social secretary. Janet Stiff has been accompanist.

Presenting the beautiful "I Hear America Singing," the chorus provided the grand finale to the Armistice Day assembly, and was received most enthusiastically by the audience. They also added greatly to "The Adoration," the Christmas cantata.

Members of the mixed chorus were cast as characters in "The Pirates of Penzance," supporting the musical atmosphere of the production. They also were featured in the Music Week concert and Baccalaureate and Commencement exercises.

MIXED QUARTET

Composed of Josephine Bugli, soprano; Dorothy Truxler, alto; Eugene Phelan, tenor; and Earl Dahlstrom, bass, the mixed quartet is selected from the glee clubs and mixed chorus. Although it has not been very active this year, appearing in only a few assemblies, the group is very well-balanced musically.

The harmony of the mixed quartet added greatly to the beauty of the Commencement and Baccalaureate exercises. They appeared also in the spring concert held in commemoration of music week.





GIRLS' GLEE CLUB

The Girls' Glee Club had for officers this year: Dorothy Schaefer, president and accompanist; Dorothy Truxler, secretary-treasurer; and Ruth Wilbur, social secretary. Opening its year of activity by assisting in the Armistice Day cantata, "I Hear America Singing," the group then added greatly to the Christmas assembly and to the evening concert held February sixth.

The girls excelled especially as characters in "The Pirates of Penzance," given March twenty-ninth, providing the musical atmosphere to the operetta. They ended a year of successful performances by participating in the Music Week Concert, and at the Commencement and Baccalaureate exercises.

GIRLS' OCTET

Consisting of special voices from the Girls' Glee Club, the octet is composed of first sopranos, Margaret Hayes and Helen Faulkner; second sopranos, Ruth Eastman, Alyce Griffin, and Charlotte Fritz; and altos, Ruth Wilbur, Marie Brown, and Sue Jewett.

The girls sang "List! The Cherubic Host" at the Christmas program and presented in commemoration of Lincoln's birthday "To Thee O Country" at the assembly given in honor of the day. Besides these performances the octet took part in the Music Week Concert and the Baccalaureate services.





BOYS' GLEE CLUB

Besides forming an excellent supporting cast in the spring operetta "The Pirates of Penzance," the Boys' Glee Club has been featured in numerous musical programs this year. They sang part of the cantatas in the Christmas and Armistice Day assemblies and were included in the evening concert of February sixth. They also took an active part in the Mothers' Day Assembly, Music Week Concert, and Commencement and Baccalaureate services.

For this year's officers the Boys' Glee Club elected Arsenio de la Pena, president; Tom Hazelrigg, vice-president; Eugene Hall, secretary-treasurer, and Eugene Phelan, social secretary. Dorothy Truxler is accompanist.

MALE QUARTET

The male quartet is composed of Eugene Phelan, first tenor; Arsenio de la Pena, second tenor; Watson Dutton, baritone; and Earl Dahlstrom, bass. These boys have been perhaps the most active of the school's musical groups this year, becoming a favorite feature in all the major assemblies, and appearing in out-of-school programs as well.

In many of their performances the quartet presented refreshingly original song skits in some cases even masquerading to fit their parts. Their well-blended voices brought encores on every occasion, humorous or serious. Among their out-of-school appearances were at the President's Ball, Masonic programs, G. A. R., Rotary Club, and several radio presentations.





"THE ADMIRABLE CRICHTON"

CAST OF CHARACTERS

Crichton	Bill Wilcox
Hon. Ernest Wooley	Watson Dutton
Lady Agatha	Valerie Kennedy
Lady Catherine	Loyola McDonald
Lady Mary	Beth Clinger
Rev. Mr. Treherne	Tom Koch
Earl of Loam	Anthony McCune
Lord Brocklehurst	Jon Weisel
Mrs. Perkins	Inise Riddle
Monsieur Fleury	Fred Bedard
Rolleston	Merton Reed
Thompsett	Francis Mollett
Fisher	Marie Wargin
Simmons	Bette Drake
Jeanne	Shirley Lee
Thomas	Francis Clapp
Gladys	Alison Merriam
Tweeney	Alma Rae Holloway
Stable Boy	Ross Holloway
Navy Officer	Donovan Worden
Countess of Brocklehurst	Gladys Luedke

ARE ALL MEN EQUAL, as Lord Loam contended, or do leaders evolve naturally from a given group of individuals, as the Admirable Crichton respectfully held? This was the subtle point that forms the peg on which was hung the theme of "The Admirable Crichton," major dramatic production of the school year. The clever four act satire on the English social system, by Sir James Barrie, was presented November twenty-third.

The question of human equalities is answered in the play when Lord Loam's yachting party, composed entirely of British peers, except for Crichton, the perfect butler, and Tweeny, a maid, was shipwrecked on a desert island. Thus, given an opportunity to start on equal terms, Crichton, in two year's time, became a veritable king, proving him the natural leader of the group. By this was his contention borne out: that customs which set one man above another in England were artificial and that the natural leader comes to the front in an even contest. These customs were very powerful, however, as was shown in the fourth act after the party was rescued, for Crichton was again butler, and the Earl of Loam, lord. The romantic element of the play was introduced by a love affair between Crichton and Lord Loam's eldest daughter, Mary, which was terminated by the rescuing of the castaways.

Bill Wilcox, carrying the lead as Crichton, portrayed the character with professional ease. Thoroughly the butler in the first and fourth acts, he changed completely into an overlord in the second and third.

Beth Clinger played Lady Mary Lassenby. Haughty and proud in the first, second and fourth acts, she became very charming in the third, carrying well the emotional climax of that act.

Alma Rae Holloway enacted Tweeny, the kitchen maid. Twisting her apron, speaking bad grammar, she pleased the audience immensely, providing laughs as well as a little pathos. Lord Loam, in the person of Anthony McCune, was an English peer who, in an effort to prove his radical beliefs on equality, gave a tea every month for his servants. After the experience of being marooned on an island, played in an appropriate doddering manner, he modified his views.

Tom Koch, portraying a young minister, Treherne, was excellent, as usual. Treherne came to life as a rather likeable, enthusiastic friend of Lord Loam's party.

Lord Brocklehurst, effeminate fiancee to Lady Mary, was enacted accurately by Jon Weisel. Gladys Luedke became his autocratic mother, the Countess of Brocklehurst, with ease. The languorous roles of Ladies Catherine and Agatha were well played by Loyola McDonald and Valerie Kennedy.

The other players in minor positions portrayed character parts excellently.





Pirates of Penzance

CAST OF CHARACTERS

Richard, the Pirate King	Earl Dahlstrom
Samuel, his Lieutenant	Elmer Barrett
Frederic, a Pirate Apprentice	Eugene Phelan
Major-General Stanley, of the British Army	Watson Dutton
Mabel, General Stanley's youngest daughter	Margaret Hayes
Kate	Ruth Eastman
Edith	Helen Faulkner
General Stanley's daughters	
Ruth, a Piratical "Maid-of-all Work"	Josephine Bugli
Edward, a Sergeant of Police	Leland Buker

GENERAL STANLEY'S BEAUTIFUL DAUGHTERS

Dorothy Taylor, Frances Miller, Mary Jane Mosby, Lucy Mix, Phyllis Lytle, Faye Bryan, Alice Hightower, Marian Baird, Eileen Miller, Margaret Wheelbarger, Lyla Burtman, Edith Mattson, Carlisle McKenzie, Kathleen Kittendorff, Louise Line, Barbara Mahrt, Bette Drake, Velma Dunlap, Ferne Silverton, Alison Merriam, Ruth Wilbur, Jean Dickson, Frances Whaley, Lucy Clapp, Mary Jane Alkire, Lucille Bogard, Dorothy Schaefer, Avis Lintz, Charlotte Fritz, Anne Marie Forssen, Sue Jewett, Dorothy Truxler, Grace Wrigley.

THE DESPERATE PIRATE BAND

Arsenio de la Pena, Fred Barrett, Tom Strong, James Johnson, Eugene Hames, Stanley Shaw, Loran Stanfield, Charles Follman, Harry Graves, Dick Schipporeit, Everett Mix, Bob Harkness, Bill Kennedy, Robert Mann, Leonard Kuffel, Bruce Young, Mike Stoianoff, Bill Kline, Paul Holmes, Gene Clawson, Rollin Greene, George Jennings, Jack O'Neil, Henry Cuplin, John Landgraf, Bud Myrdal, Carl Ashford, Tom Hazelrigg, Charles Mason, Robert Clark, Edwin Stahl, Lester Vicain, Robert Anderson.

THE DOUGHTY POLICE FORCE

Lloyd Pearson, Crit Shawver, Bruce Young, Chester Peak, Billy Maclay, Arthur Kimball, Bud Myrdal, John Toole, Tom Hazelrigg, Robert Nelson, Austin Olson, Robert Clark, Bill Strothman, Eugene Hall, Bill Vitt, Carl Gully, Robert Anderson, John Landgraf.

IT WAS ALL A MISTAKE that Frederic as a lad was apprenticed by his deaf nursemaid to a band of pirates rather than to a pilot. And when Frederic, handsomely portrayed by Eugene Phelan, tenor, reached his twenty-first year, fell in love, and resolved to destroy the buccaneers, excitement ran high in the rollicking Gilbert and Sullivan operetta presented in the auditorium March 29 and 30.

But complications arose in Frederic's path when he discovered that since he was born on the twenty-ninth of February, and had consequently seen only five birthdays, he was still duty-bound to the pirate horde. Forced to choose between his love for the Major-General's youngest daughter and his sense of duty, he sacrificed the former and joined once again his swarthy companions in their battle against the doughty police force. Peace was affected, however, and Frederic was at last free to seek his sweetheart.

The roles of Richard, the iron-willed Pirate King, and Samuel, his hawk-like lieutenant, were played and sung realistically to every swaggering detail by Earl Dahlstrom, bass, and Elmer Barrett, baritone, while Leland Buker as the bustling sergeant of police brought down the house with laughter. Watson Dutton, baritone, gave one of the outstanding performances in the production, acting sensationally the comical part of Major-General Stanley, the grumpy old officer who had "information vegetable, animal, and mineral" on every subject.

The female side of the cast was equally well characterized. Mabel, General Stanley's youngest daughter, who was in love with Frederic, was beautifully sung by Margaret Hayes, soprano. The difficult vocal part of Ruth, the pirate maid, was carried with ease by Josephine Bugli, mezzo-soprano, and lovely solos by Ruth Eastman as Kate, and Helen Faulkner as Edith added greatly to the effect of the operetta.

An outstanding feature of the performance was the excellent support given the cast by the choruses, who not only looked and acted their parts in the plot, but sang the many musical numbers with amazing alacrity. The orchestra which accompanied the singers blended perfectly at all times.

The excellent music, fine acting, and skillful grouping shown in the operetta reflect greatly to the credit of Miss Gladys Price, Musical Director; Miss Mary V. Harris, Dramatics Director, and Miss Marion Davis, Dancing Director. The technical and business staffs and costume and property committees also deserve much praise for their invaluable aid in staging the production.



CALENDAR

SEPTEMBER

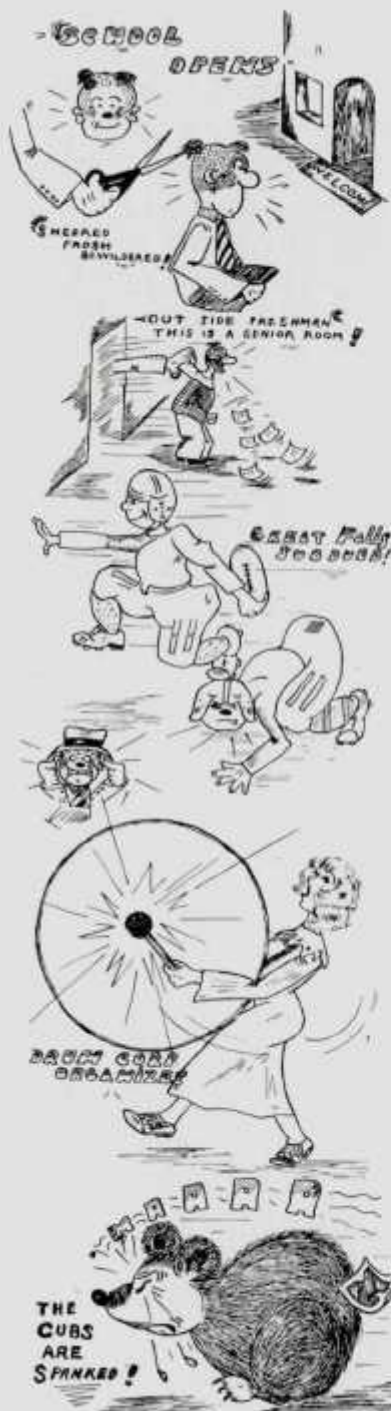
- 11, 12, 13—1239 $\frac{1}{2}$ students register for classes. (Blame the last $\frac{1}{2}$ on a diminutive freshman.)
- 17—Principal Ketcham conducts general boys' assembly.
- 21—Great Falls knocked for a loop by our football squad 6-0. Teams nearly lost as blizzard sweeps the field.
- 28—Girls' Club opens fire with the Coed Prom.
- 29—M. H. S. skins Hamilton in close game 56-0.

OCTOBER

- 5—Mr. J. L. Campbell gives Victory Field dedication address in first assembly.
- 6—Our team wipes Victory Field with Whitefishers in the dedication game 25-6.
- 13—Butte is squelched 19-12. Senior Mixer in gym.
- 16—Faint rumble is heard as the Drum Corps organizes.
- 19—Juniors throw Barn Dance. (Dancers throw pumpkins.)
- 27—Missoula brings home the bacon from Anaconda. Score 14-6. Prospects seem good for a championship team.

NOVEMBER

- 9—University hides its head in shame as M. H. S. whips Cub Reserves 26-6.
- 15, 16, 17—The juniors sponsor Dumas' thriller, "The Count of Monte Cristo."
- 16—Annual staff selected—Are we glad!
- 17—Missoula snatches last-minute victory from Helena in the most thrilling game on our records to win Northern District Championship. Score: 21-19. We're going places!
- 21—Football sinks into comparative oblivion as Ping Pong Club organizes.
- 23—"Admirable Crichton," first dramatic production of year, plays to a full house.
- 29—We lose state championship title to Billings on Butte's snow-covered field. "Oh fudge!" say Missoula rooters.



CALENDAR

DECEMBER

- 13—Freshman class organizes for first time in years.
- 14—Girls sacrifice their dignity and attend the Kid Party.
- 21—Christmas Cantata. Santa Claus heartily welcomed at Junior Christmas Dance.
- 22—We outplay Miles City, 19-13, in first basketball game.

JANUARY

- 2—Weary vacationers return to school to rest up after holidays.
- 11—Whitefish quint noses us out, 21-19, in overtime game.
- 14—Grizzly Band gives a benefit concert for prospective high school band.
- 19—Principal G. A. Ketcham's contract as head of our school is renewed for two years.
- 24—Basketball squad cheered at pep assembly and presented with sticks of candy.
- 26—We trounce on Butte Public with a score of 33-21. "M" Club Dance follows game.
- 31—Fred B. Smith, noted traveler, addresses school at general assembly. The Purples defeat Helena 23-14 in hard-fought contest.

FEBRUARY

- 6—Livingston takes us 24-23 with a last minute rally.
- 7—We lose to Billings in overtime game. Score: 31-29.
- 8—"Crimson Coconuts" and "Neighbors" in evening program with orchestra concert receive hearty applause.
- 12—Lincoln's Birthday Assembly.
- 15—Butte Central trounces us 28-19. Sophomores dance in lunchroom, the first time one was ever held there.
- 16—Kalispell succumbs to Missoula's football offense in rough basketball game; (there were twenty-nine personal fouls). Score: 33-27.
- 22—Washington's Birthday commemorated by annual Girls' Club Dance.



CALENDAR

MARCH

- 1—Senior matinee dance in the lunch-room. Principal Ketcham states approval of lunchroom dances.
- 5—Quill and Scroll initiation. What fun!
- 8—Missoula takes third place in Northern District Basketball Tournament.
- 9—Junior Bubble Ball.
- 13—National Honor Society elects thirty-nine members.
- 16—Final judging in Bitter Root beauty contest.
- 29—League of Nations Contest.
- 29, 30—Pirates of Penzance is great success.

APRIL

- 5, 6—F. F. A. meet.
- 9—National Honor Society Banquet at the Florence Hotel.
- 10—Colossal super-attraction! "M" Club assembly presents "greatest circus on earth."
- 27—Senior Spring Frolic.

MAY

- 15-18—Track meet.
- 24—Junior Prom.
- 24—The Bitter Root appears. Are we proud!
- 31—Last day of school for the seniors.

JUNE

- 2—Baccalaureate services.
- 6—Commencement.



Climaxing the most successful season in the history of football at Missoula High, the Purple and Gold squad was runner-up in the state interscholastic gridiron race. They defeated Helena, 21 to 19, in the most thrilling game ever played on Dornblaser Field to give them the right to play Billings for the state championship.

The Purple's vaunted aerial attack was unable to click but three times against the Broncs Thanksgiving Day at Butte and, as a result, they scored two touchdowns. The Broncs ran up a 21 to 0 lead by the end of the third quarter, while Missoula was able to get only 14 points. Rogers, all-state halfback, was injured in the second quarter and played only a few minutes during the rest of the game. Normandeau plunged through the center of the Billings line for both scores after passes by Rogers and Potter had placed the ball within the ten-yard line. The final score was Missoula 14, Billings 28.

Both of the squads were awarded team and individual trophies at a banquet in their honor at the New Finlen Hotel on the evening of November 29.

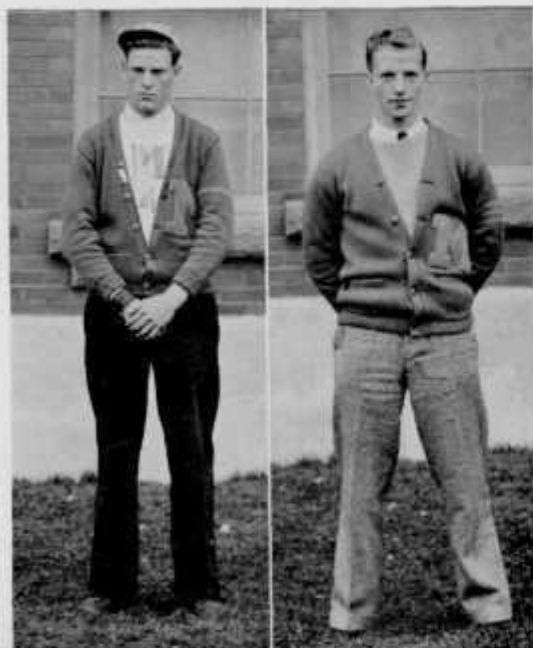
Members of the Missoula squad received silver footballs while the Broncs were given gold football watch fobs. Coach Sam Kain and Coach Clyde Carpenter of Billings were among the speakers at the dinner.

When the team returned from Butte they were met at the depot by a large group of rooters and the Drum and Bugle Corps.



Coach Sam Bruce Kain

Managers Mace and Perry





Top to Bottom:
Campbell, Normandeau, Koch

REVIEW OF THE SEASON

Coach Sam Kain was not very encouraged as he looked over his prospects for the 1934 season. There were eight lettermen missing from the Western District champions of '33, among them Leo Lundy, all-state half-back, and George Cote, line-smashing fullback. Three other promising players were declared ineligible.

Fourteen of his '34 squad had been under his tutelage the year before, but only five of them had been regulars. On September 2 he started intensive drill. The Alumni were defeated, 13 to 0, in the first test of the Missoula-gridders. Most of the 1933 grads, with a few older players were on the Alumni team.

Missoula 66, Polson 0

"Much improvement was shown," said Coach Kain after the Purples had snowed Polson under an avalanche of touchdowns. The game was played September 15 on the new athletic field. Greg Rice and Guy Rogers both turned in good performances.

Missoula 6, Great Falls 0

The first of a long line of jinxes was broken when the Bisons were defeated on an icy gridiron September 21 at Great Falls. On the third play of the fray Rogers passed 13 yards to Potter, who continued on toward the goal for the only score of the game. Sixty-eight yards were covered on this long jaunt. Normandeau was the outstanding Purples' backfield man in this hard-fought contest. Great Falls had won, 19 to 6, the year before.

Potter

Grace



Left to Right:
Robinson, Barrett,
Murphey, Flint, Oeder



ATHLETICS

Missoula 56, Hamilton 0

The Purple and Gold passing attack was the feature of the Hamilton contest September 29, as they rolled up 206 yards by the aerial route. Missoula made 323 yards from rushing, compared to the Valley team's 24. Coach Kain used all of his 25 players. Rogers counted four touchdowns, Searles three, Rice and Grace, one each. The Purples presented a versatile offense which clicked on almost every play.

Missoula 25, Whitefish 6

Coach Hinderman's team was the first to score on Missoula in five games and they held the Purples scoreless for three quarters October 6 at the dedication game of Victory Field. Toward the end of the third period they snapped out of their lethargy and rolled up four touchdowns, with passes leading to all the scores. Coach Kain said that "too much over-confidence almost caused my boys to lose."

Missoula 19, Butte Public 12

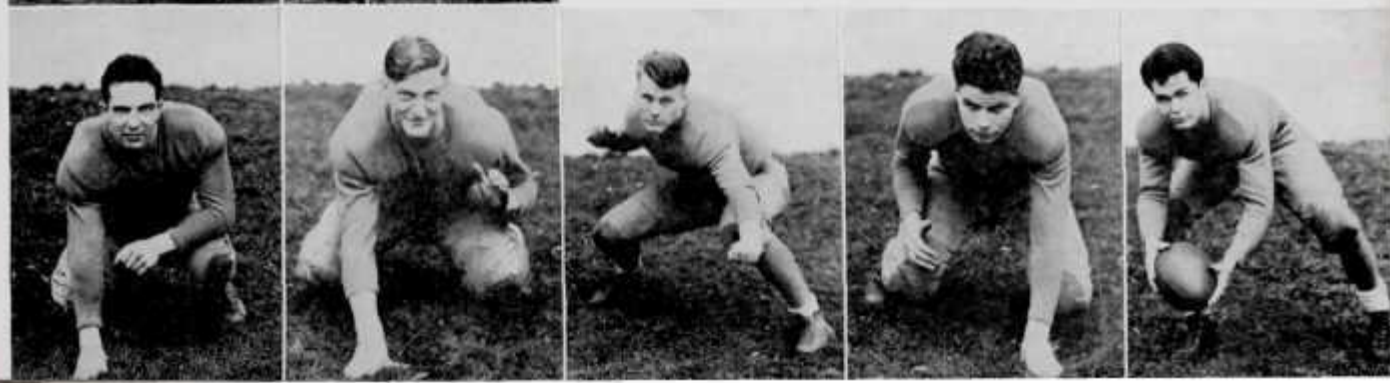
Another jinx of long standing was cracked as the Mining City team was defeated on Dornblaser Field October 13. Butte scored one touchdown on one of the queerest plays ever seen in Western Montana and counted their second one against the Purples second string. The most outstanding feature of this fray was the way Missoula continually out-played

Butte in every department of the game. They out-rushed Butte, 265 yards to 59, and made 14 first downs to eight for Butte. Butte, however, made more yardage from passes than did the Purple and Gold eleven.

Searles, Nybo, Zadra, Rogers and Rice were consistent stars for the Missoula offensive and defensive play.

Rogers

Thompson



Top to Bottom:
Searles, Rice, Nybo

Left to Right:
Zadra, Lawrence,
Figg, Struble, Price



First Touchdown Against Billings

Missoula 26, Kalispell 0

Guy Rogers turned in a splendid performance of broken-field running as he dashed 91 yards around the Braves' left end for a touchdown which began the rout of Kalispell on their home field October 20. Rogers chalked up 226 of Missoula's 243 yard total gained from scrimmage. Defensive play of the Purple's forward was strong, permitting Flathead to gain only 42 yards by rushing. Coach Kain announced that, "my boys did some fine work," after they returned to Missoula.

Missoula 14, Anaconda 6

The Anaconda Copperheads, playing on their home field, October 27, were as stubborn a foe to defeat that Missoula had found so far in a hard season. They outplayed the Purples for the entire first half and had a six-point lead as the third quarter began. Beal, Anaconda fullback, averaged 46 yards per punt to outdistance Potter and Rogers of Missoula. Stan Nybo received a short pass from Rogers for the first touchdown. Nybo intercepted an Anaconda forward in the fourth quarter and Rogers crashed his way over center to make the final score 14 to 6. Passes to Searles and Nybo counted each of the points after touchdown.

Missoula 26, Cub Reserves 6

Spectacular pass plays and strong interference, coupled with sturdy defensive work, were too much for the University Cub reserves to handle, and they

The Broncs Go Into Action





Rogers Tosses a Long One

were defeated, 26 to 6, on Victory Field November 9. Forward-laterals gained consistently for the Purples, and their wide end sweeps picked up yardage. Coach Sam Kain used his substitutes as much as possible in order to save his regulars for the clash with Helena.

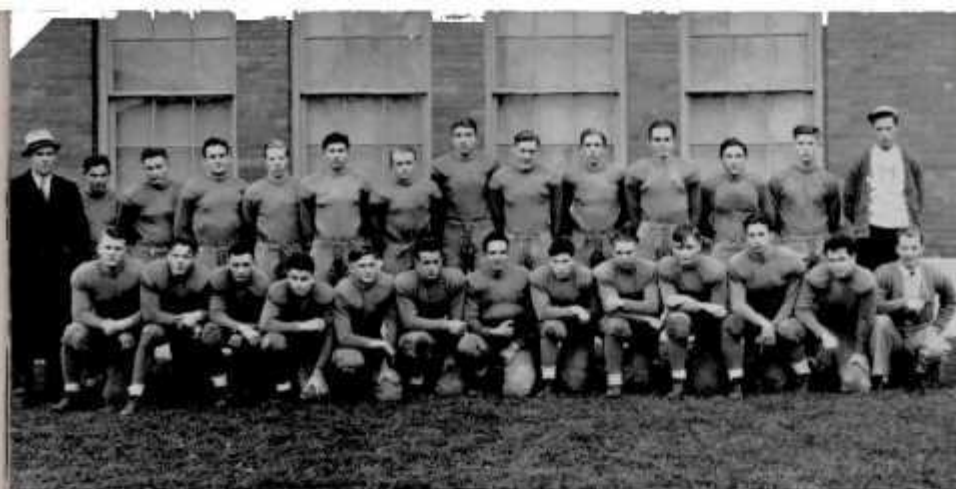
Missoula 21, Helena 19

November 17 on Dornblaser Field was the stage for the fastest, most polished gridiron show by two high school teams ever seen in Western Montana, as the Crimson Bengals were nosed out in the last two minutes of a thrill-packed contest by three sensational passes. Rogers took Strong's kickoff on the 7-yard stripe and returned it to the 27, then passed to Searles for a 48-yard gain. Rogers stepped back in pass formation and flipped a bullet pass to Greg Rice over the goal line for Missoula's third score. Larry Potter, freshman ace, place-kicked all three of Missoula's points after touchdown.

Missoula scored early in the first quarter when Rice started on a wide end sweep, cut back and raced 36 yards to the goal line behind perfect interference. Rogers went over the pay-line from the three-yard stripe after three forward passes and one lateral had placed the ball within scoring distance. Strong, the Bengal's all-state halfback, used his elusive, side-stepping change of pace to score two of Helena's three touchdowns, and Fryett counted the other. Kelly was the most brilliant player in the Helena line, making crunching tackles all over the field, while Zadra, Figg, Nybo, Oeder and Robinson deserved a large share

Line Crash In The Cub Game





The 1934 Football Squad

of the praise for their staunch work in the Purple and Gold forward wall. Rogers and Rice, aided by Normandeau and Potter, were the most effective men in the Missoula backfield.

Two weeks of light workouts on blocking and tackling, with hours spent on perfecting the execution of plays occupied Coach Kain's squad in preparation for the Billings game. A snowswept grid ruined Missoula's chances at Butte, as the wet, slippery ball continually oozed through their fingers.

Looking toward the 1935 season, we find that Missoula will be well fortified in the line, with Searles at end, Figg and Robinson, tackles; Childley and Perry, ends; Ackerlund, tackle or guard, and Kimball, center, returning for another year of competition. A heavy, fast backfield, composed of Rogers, Blaine Normandeau, Vic Grace and Larry Potter will carry the brunt of the Purples' offense.

The fundamentals of the gridiron sport were carefully learned in spring practice in '35, where all phases of the game are thoroughly practiced in preparation for the next fall's campaign. Coach Kain emphasizes blocking, which makes the "perfect" plays possible, and tackling, which prevents the other team from scoring.

Much credit is given Managers Ray Perry and Walter Mace for their fine work in caring for the football equipment and other minor details which help build a football team. Perry coached the freshmen in 1934, from which there will be many boys to fill the places of the graduating veterans of the finest team in the history of Missoula County High School.

Rogers Intercepts a Bengal Pass





Solun, Miller, A. Croonenberghs, Oeder, Mize, Coach Kaib
 R. Perry, Weikel, Piononous, Price, Ritz, Petrasse, Kizer
 G. Croonenberghs, Searles, Russell, B. Perry, L. Potter, C. Potter

BASKET BALL

Missoula High's basketball team completed an erratic season by placing third in the Northern Division Class A tournament at Great Falls March 6 to 9. Last year Missoula won the tourney, but was defeated by an Anaconda "Wonder Team" in the state finals.

The 1934 quint set a record in the number of Big 14 conference victories, taking the scalps of Miles City, later the state champions, Anaconda, Butte Public, Helena, and Kalispell.

At the Northern zone play-off the Purple and Gold five "clowned" in all its games, defeating Havre, 36 to 11; Helena, 31 to 21; and Lewistown, 38 to 24, in the consolation contest for third place. In the semi-final fray against Glasgow the Purples lost two valuable players on personal fouls in the latter part of the third quarter and the Highline team forged ahead to win, 34 to 23.

Prospects for the team next season include Searles, Russell, B. Perry, L. Potter, C. Potter, G. Croonenberghs, Kizer, Weikel, and Miller. Guy Rogers, all-state forward in the 1934 state finals, will be available for competition after a year's recuperation from a severe injury sustained in the state gridiron title game at Butte Thanksgiving Day, 1934.

RESULTS OF THE 1934-35 SEASON

- | | |
|--------------------------------|--------------------------------|
| Missoula 37, Arlee 7. | Missoula 23, Helena 14. |
| Missoula 19, Miles City 13. | Missoula 23, Livingston 24. |
| Missoula 18, Great Falls 30. | Missoula 29, Billings 31. |
| Missoula 19, Whitefish, 21. | Missoula 23, Miles City 25. |
| Missoula 20, Butte Central 24. | Missoula 16, Miles City 40. |
| Missoula 34, Deer Lodge 23. | Missoula 19, Butte Central 28. |
| Missoula 15, Butte Public 34. | Missoula 33, Kalispell 27. |
| Missoula 27, Anaconda 17. | Missoula 22, Helena 28. |
| Missoula 33, Butte Public 21. | Missoula 20, Great Falls 27. |
| | Missoula, 23, Anaconda 36. |





Mate, Clapp, Russell, G. Croonenberghs, Moy, Golden, Coach Kain, Tubbs, Reynolds, Price, Perry, Nybo, Searles, Potter, Figg, Robinson, Jacobsen, Plummer, Coleman, Rice, Mason, Peterson, Perry

1935 TRACK PROSPECTS

Missoula High School's chances of winning the 32nd Interscholastic track and field meet for the second consecutive time are much better than was expected at the beginning of the season. At that time only two point winners from the 1934 state championship squad were reporting for practice. Greg Rice, victor in the mile and half-mile runs, and Ed Russell, who tied for first in the pole vault last May, being the only reliable money-makers for the 1935 contests. A Purple and Gold team never before has repeated its performances for two consecutive years, but the jinx is expected to be broken.

Missoula won the five year cup in 1934, with Butte placing second. Every five years a cup is awarded to the school making the largest number of points in those years. As a result of Butte's wide margin of victory in the '33 meet, they were ahead of Missoula until the finish of the 1934 competition.

Russell probably will collect points in the pole vault, and is a contender in the high jump and low hurdles. Greg Rice will undoubtedly make ten points in the distance runs, and also fill in on the relay team, which does not add to the point total. Ralph Figg, 185-pound football player, has a good chance to break the state record in the discus throw, having made around 120 feet in practice, and is improving rapidly. Figg might get a few points in either the shot put or javelin, but is not particularly strong in these events.

A. Croonenberghs, weights
Rice, mile and half-mile

Russell, pole vault



Bobby Price, another football star, is the "speed demon" of the squad, hitting a fast 440-yard dash and will probably be entered in the 100 and 220-yard sprints. He is being pushed by Burton Perry in the "440."

Plummer and Peterson are other distance runners who with a little experience place in the mile or the "880." Herb Searles is the best high hurdler, and also runs the 220-yard low hurdle race. Jacobsen, Nybo, and Wold are more inexperienced prospects for the low hurdles.



Sprint Take-off

Charles Jacobsen leads the broad jumpers, but has not hopped over 19 1/2 feet in practice. Twenty-one feet three inches took first place in the broad jump last year, Leo Lundy of Missoula winning this event. George Croonenberghs, a tall, slim lad, has developed the best high jumping form so far. Al Croonenberghs, six feet four inches of basketball center, might be able to help Figg in the weights, throwing the shot and discus with much ease.

Butte Public is practically conceded second place if Missoula wins, but Great Falls is regarded as the "dark horse" of the meet. The Mining City squad will include a miler who trailed Rice by 30 yards in his record-breaking mile last May. Soltero of Fergus is one of the fastest sprinters to return to competition. The field events have no outstanding weight men or jumpers this year, so that field will be wide open for points.

Three state records were broken as Leo Lundy topped the low hurdles in 25 seconds flat. Campbell of Park County flipped the javelin 194 feet six and one-half inches. Erwin of Miles City ripped off a 2 minutes and 3 and nine-tenths half mile run. Lundy also won the high hurdles and broad jump, placed fifth in the 100 for a total of 15 1/2 points, getting high individual honors of the meet. He graduated from M. H. S. last spring.

The high jump, won by Decker of Whitefish, halted at 5' 11 3/8". Wills of Park County put the shot 48 feet 4 inches to take first place. He will not be eligible to compete here in May. The discus throw was won with a heave of 120 feet 11 inches. The record is 128 feet. Butte Public usually has two or three strong men for the weights, as does Park County and other large high schools of the state.

High hurdles

G. Croonenberghs, pole vault

Figg, weights



BITTER ROOT BEAUTY CONTEST WINNERS

An all-school beauty contest was conducted by this year's staff to provide an added feature of interest in the 1935 Bitter Root. Each home room nominated its two most attractive candidates, and from this group of seventy-two nominees twelve were chosen for the final competition. On March 16 the three first winners were selected, their identities being secret, however, until the date of publication. The remaining nine finalists were not judged, but were awarded equal places on the Honorable Mention page.

BARBARA ANN MAHRT

Adjudged First



CARLISLE MCKENZIE

Adjudged Second



ANNE MARIE FORSSEN

Adjudged Third





HONORABLE MENTION

DOROTHY ANN MURPHEY

JANET STIFF

LOYOLA McDONALD

BETH CLINGER

MARY COWELL

MARJORIE McCLAIN



GERALDINE GARVEY

EDINE PETERSON

ESTHER FECHNER

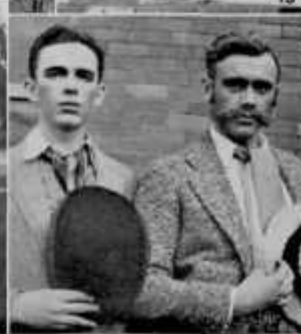


1. Ignorance is bliss.
2. Leland (What-a-man) Buker.
3. Ray and Val.
4. "In the fall a young man's fancy—"
5. Frankenstein.
6. Dickie Byrd Schipporeit.
7. "Hot dawgs—10c."
8. Joe Woodworth.
9. Rousing it.
10. Anne Marie.
11. The age of innocence.
12. John, Spud, and Krest.
13. That schoolboy complexion.
14. Three of a kind.
15. Hughes hard at work.
16. Alma Rae and Loyola.
17. Beware the dog!

1. Looking out of Chem. lab.
2. Pals.
3. Looking into Chem. lab.
4. Mari Stoianoff.
5. Myrl Weikel.
6. Shirley Lee.
7. The Fourth of July Parade.
8. Norma Watson.
9. The assistant editor.
10. Marie and Emaline.
11. Bang.
12. Caught napping.
13. Oh, Joy!
14. Sara Wadell.
15. Smiles.
16. Walter Coombs and Jack Hughes.
17. Dot and Herb.
18. In wading — Marlice and Mary Lou.
19. Junior Class Prexy.



1. Price in the hands of a deceiver.
2. Lillian Akin.
3. Git along, little doggie.
4. Scotty and Gus.
5. Green-apple season.
6. Bronco Buster.
7. Lorraine, Ruth, and we forget the dog's name.
8. Third floor hall.
9. Such studious study hall students.
10. Instrument panel on N. W. airliner.
11. Johnny Campbell — our football star.
12. Henry Anderson.
13. Montana fawn.
14. All dressed up and no place to go, Carlabelle.
15. Turner and McCune.





1. Old Clothes Day: Peg, Eunice, and Sara.
2. Stop!
3. Where are the funnies?
4. Up a study hall aisle.
5. The Konah Staff at work.
6. Mary Jane, Marybeth and Mary.
7. Miss Noble one Monday morning.
8. Snow - plow on Lookout Pass.
9. Alice Hightower and Irma Randall.
10. "Bill Tilden" Hazelrigg.
11. Mrs. Crit Shawver.
12. Don't get your feet wet, Charlie!
13. April 1st: It rained ducks on Higgins Avenue.
14. The Whittler.
15. Loyola and Gus Zadra.
16. Don't hurt him, George.

WHAT THE CAMERA MISSED



SPORT SPLASHES

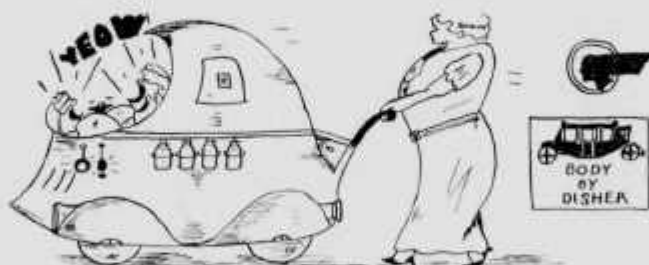


Vol. XXX

A Whale of a Publication

May 15, 1945

The Eyes that Follow the New Bontiac See
"THE MOST BEAUTIFUL THING ON WHEELS"



Watch your neighbors grow green with envy when your whole family glides past in the New Bontiac Baby Buggy. "The Most Beautiful Thing on Wheels!" Bontiac offers the best to be had in riding comfort, seating anything from twins to sextuplets. Give the kiddies a treat by having a free demonstration at your dealers. Then buy—and be sure to buy Bontiac.

NEW BONTIAC

Sixes and Eights

\$614 and up f. o. b. factory.
Accessories, such as wheels, chassis, tires, springs are extra.



This Is My Offer

Away with the old-fashioned idea that building up a beautiful body requires months, years of training! Away with the contention that a brawny physique is just some fellows' good luck! I was once a 97-pound weakling myself—now look at my manly torso—see those rippling muscles—I've got a "build like a million," and YOU, too, can have one!

Big promises mean nothing to me! I back up all my claims with guarantees—guarantees to make a man out of you in just SEVEN DAYS no matter how puny you are. Take advantage of this opportunity NOW, TODAY!

MY LOW PRICES

New biceps.....	per pair	95c
Super-strong tendons.....	doz.	43c
Metatarsal arches.....	4 for	75c
Chest muscles, one set.....		59c
Longissimus dorsi.....	each	25c

SPECIAL THIS WEEK

For horse-back riders,
Gluteus maximus.....2 for \$1.00
Write for new free price list
on additional parts.

FUDGE!!

Says Ralph (Atlas) Figg,
holder of 3,744 world titles.

"I CAN GIVE YOU A
NEW BODY IN SEVEN
DAYS!"



Ralph (Atlas) Figg, holder of 3,744
world titles.

LEARN PSYCHOLOGY!
MASTER YOUR SOUL!

Why be a failure in life? Why worry? Why be in doubt any longer? Enroll in Frank T. Kelley's illuminating, enlightening course and obtain free the revolutionary new book "Pseudo-Bio-Psychics," or "The Key To It All." You can have success, friends, popularity, happiness—you will be able to master your mind, your soul, your wife—even your mother-in-law, by adapting to your own self a few of Dr. Kelley's famous principles! Don't wait any longer! Just write to Frank T. Kelley, "The Human Wizard," and his great book will be sent absolutely free. Send no money. Just pay the postman \$18.98 when he delivers it and the book is yours.



PATRONIZE THESE ADVERTISERS

By their generous support in enlisting in our classified directory the following business firms have made possible a better Bitter Root. As both advertisers and boosters they deserve our liberal patronage. Show your appreciation by patronizing them.

GENERAL MERCHANDISE

KELLY'S 5c TO \$1 STORE, 236 N. Higgins

HARDWARE

BARTHEL HARDWARE

JEWELERS

B & H JEWELERS

Corner Higgins and Main

KITTENDORFF'S

Fine diamonds and watches

LAUNDRIES

MISSOULA LAUNDRY COMPANY—East Spruce

Quality launderers and cleaners

LUMBER COMPANIES

INTERSTATE LUMBER CO.

Building supplies, fuel, boxes

MEAT MARKETS

JOHN R. DAILY, INC.

MEN'S WEAR

THE SPORT SHOP

Exclusive men's wear

YANDT'S MEN'S WEAR

Next to Shapard Hotel

MUSIC STORES

DICKINSON PIANO COMPANY

218 Higgins Ave.

Radios Refrigerators
Washers Everything musical

OFFICE SUPPLIES

THE OFFICE SUPPLY

Visit the new Book, Art, and Gift
Departments of the Office Supply Co.

OSTEOPATHIC PHYSICIANS

DR. ASA WILLARD—Wilma Bldg. Phone 5200

PHOTOGRAPHERS

HAUGEN'S STUDIO—520 South Third Street

Everything photographic—Oldest studio in
Missoula

McKAY ART COMPANY

Portraits—Kodaks—Finishing

PRINTERS

BUREAU OF PRINTING

Commercial printing a specialty

MISSOULIAN PUBLISHING COMPANY

Reliable printers and publishers. Phone 2162

SERVICE STATIONS

STANDARD OIL SERVICE STATION

Peterson and Dunlap. Corner of Higgins and
Brooks

TEXACO CERTIFIED SERVICE

S. R. (Stan) Smart, Lessee Dixon S. S. No. 2

SHOE SHOPS

DIXON & HOON

HAINES BROWNBILT SHOE STORE

Shoes for all occasions—Strutwear hosiery
to match

THEATRES

THE COMMUNITY THEATRE

The Community Theatre extends to each member
of the graduating class its most sincere wishes
for a happy and successful future.—Thomas C.
Grindley, Mgr. Ernie Grindley, Publicity.

TYPEWRITER AGENCIES

LISTER TYPEWRITER SERVICE

Underwood agents. Rentals—Repairs—Service

UTILITY COMPANIES

MISSOULA GAS & COKE COMPANY

It can be done better with gas.

Vol. XXX

A Whale of a Publication

May 15, 1945

He May Be
A Powerful
Political
Boss



....But

He Can't Escape 'PINK TOOTHFLUSH'

He rules his political domain with an iron hand—the profits he reaps from graft each year reach a startling sum—millions are under his sway—but he's a dental cripple just the same! He did not heed his better judgment when he noticed the warning "pink" on his toothbrush. Now he must pay the awful price of neglect, and blow 50c on a new toothbrush!

Beware of the menacing "pink toothflush." If your gums are tender, massage Dishpana in liberally, the more liberally the better (for the Dishpana Company). Dishpana is a true milk of magnesia dentifrice (77% sand, 20% ground glass, and 3% raspberry flavoring. Also a little milk of magnesia added for color).

DISHPANA TOOTHPASTE



Dr. Millard Petrovinsky, Vienna, Austria, says, "P.D.Q. YEAST is good."

In 9 cases out of 10 digestive disorders stopped with the use of

**"P. D. Q." YEAST
TABLETS**

In cities, towns, everywhere, Gleichmann's new "P. D. Q." YEAST is meeting with hearty response. "It helped me," writes Gertie Schmaltz, of Hobunktown, New Jersey. "I cannot give it too much praise," says Herman Obergutonshurtz, Colorado State prison. Countless others (three to be exact) have showered word after word of thanks to the makers of the wonderful product.

Eat 75 cakes daily—before meals—after meals—between meals. At entertainments you'll be the "life of the party" if you carry several dozen cakes of Gleichmann's "P.D.Q." YEAST in your pocket. Buy some today.

**My Golden Discovery
Has Brought Instant
Relief to Thousands**

Says E. A. Erickson, noted Swedish chemist, discoverer of "Vitalo."



Dr. E. A. Erickson, eminent chemist, making the discovery that has shocked thousands.

What is your ailment? Are you afflicted with laryngitis, ingrown toe-nails, mal-nutrition, dandruff, pink hair-brush, high blood pressure, insomnia, hyper-acidity, cosmetic skin, inferiority complex, rusty drains, run-over heels, housemaid's knee, etc.? If you have these or any of a score of other difficulties, don't wait. Get safe, effective VITALO from your druggist. Take a bottle a day for two months and get rid of corns, traveling salesmen, income tax collectors, and other nuisances. Read what Mrs. Ima Sucker writes: "I endorse VITALO heartily. (Send check by return mail.) A month ago I weighed 385 pounds, had fallen arches, and no pep. After one bottle I lost 300 pounds and feel much better, thanks to this wonderful remedy."

Try VITALO today. Only \$3.75 at your druggist. If you aren't satisfied, just try to get your money back.

VITALO—Nature's Helper

PATRONIZE THESE ADVERTISERS

By their generous support in enlisting in our classified directory the following business firms have made possible a better Bitter Root. As both advertisers and boosters they deserve our liberal patronage. Show your appreciation by patronizing them.

AUTOMOBILE AGENCIES

FISHER-KRAABEL COMPANY

Chevrolet—Oldsmobiles—used Cars

KENNEDY MOTOR COMPANY

Chrysler, DeSoto and Plymouth

MURRAY MOTOR COMPANY

Buick and Pontiac—Sales and Service

NYBO & COMPANY, INC.

Best wishes to the class of 1935

BANKS

THE WESTERN MONTANA NATIONAL BANK

Missoula, Montana

THE FIRST NATIONAL BANK OF MISSOULA

BARBERS

TRAIL BARBER SHOP

Higgins and Broadway—Spon & Edwards

BEAUTY SHOPS

EDGMOND BEAUTY SHOP

115 Brooks Street—Phone 4335

NORA BROWN BEAUTY PARLOR

No. 23 Higgins Block—Phone 4154

BOOK COVERS

JOHNSON-COX COMPANY, Tacoma, Wash.

This cover is indicative of our craftsmanship.

CANDY

MAJESTIC CANDY AND BEVERAGE COMPANY

Drink bottled Coca-Cola. Order a case for home.
129 West Broadway.

PALLAS CANDY COMPANY

Sandwiches and ice cream

DEPARTMENT STORES

McCRACKEN STORES, 123 East Main

MISSOULA MERCANTILE COMPANY

DRY CLEANERS

BUTTE CLEANERS, 508 South Higgins

Phone 3131—Exclusive dry cleaners

DRUGGISTS

HARKNESS DRUG STORE

Corner Pine and North Higgins Ave.

HOLLYOAK DRUGS

Prompt service and quality merchandise

MISSOULA DRUG COMPANY

Wholesale and retail

PETERSON DRUG COMPANY

Prescription Pharmacy

PUBLIC DRUG COMPANY

Fountain Lunch

SOUTH SIDE PHARMACY—Phone 4466

School supplies, cosmetics, candies and drugs

ELECTRIC POWER COMPANIES

THE MONTANA POWER COMPANY

ENGRAVERS

SPOKANE-AMERICAN ENGRAVING CO.

Your story in pictures leaves nothing untold.

FLORISTS

GARDEN CITY FLORAL COMPANY

Home grown flowers

FUNERAL DIRECTORS

MARSH & POWELL

Phone 3441—Missoula, Montana

GROCERS

THE ARCADE MARKET—MISSOULA'S FRIENDLY STORE

Fancy groceries, fresh vegetables and quality meats

BOURDEAU MERCANTILE COMPANY

Meats and groceries

D'ORAZI'S—Missoula, Montana

Congratulations, class of '35

K & W GROCERS, INC.

Corner of Fourth and South Higgins

QUALITY MARKET, INC., 614 S. Higgins Ave.

Choice fresh meats and Monarch finer foods

TUBBS-CAREY COMPANY

"Lest Old Acquaintance Be Forçot"

"Lest Old Acquaintance Be Forçot"



MISSOULA AT NIGHT

This picture was taken at 10:30 P. M. from Mt. Sentinel.

ACKNOWLEDGMENTS

The staff of the 1935 BITTER ROOT expresses its sincere appreciation to the following firms

PRINTERS

*Bureau of Printing
Missoula, Montana*

COVERS

*Johnson-Cox Company
Tacoma, Washington*

ENGRAVERS

*Spokane American Engraving Co.
Spokane, Washington*

PHOTOGRAPHERS

*Haugen's Portrait Studio
Missoula, Montana*

